



2021 SMP Package VI (Hale Avenue, Hoover Avenue, Kernan Drive) Project
Solicitation Number: CO-00360
Job No.: 20-5013 & 20-5512

ADDENDUM 1
August 25, 2020

To Bidder of Record:

This addendum, applicable to work referenced above, is an amendment to the bid proposal, plans and specifications and as such will be a part of and included in the Contract Documents. Acknowledge receipt of this addendum by entering the Addendum number and issue date on the space provided in submitted copies of the bid proposal.

| |
|-------------------------------|
| RESPONSES TO QUESTIONS |
|-------------------------------|

- 1. Question:** Will the proposed water tie-ins be completed in normal working hours after the proper notifications are done?

Response: *All water tie-ins associated with Package VI are to be made during normal working hours.*
- 2. Question:** Please clarify if the bid items referencing the removal and replacement of concrete curbs, sidewalks and driveways will be paid for the water service and sewer service crossings where this work is required? Not subsidiary?

Response: *Removal and replacement of concrete curbs, sidewalk, and driveways within the limits of water and/or sewer service trenches are subsidiary to the cost of the service and therefore no separate pay item. Removal and replacement of concrete curbs, sidewalks, and driveways outside/beyond the limits of the trench are paid for under the separate pay items of concrete curbs, concrete sidewalks, and concrete driveways.*
- 3. Question:** Where flowable fill is required for the sewer main encasement, will the sewer services also require flowable fill encased around the laterals? If yes, will this work be paid for under flowable fill bid item?

Response: *For sanitary sewer laterals crossing over or under a water main, a twenty-foot section of SDR 26 ASTM D2241 lateral pipe centered on the water crossing is to be encased in flowable fill meeting or exceeding 160 pounds of cement for every cubic yard of sand. Sanitary sewer service laterals parallel to and having less than the required nine-foot separation distance from a water main/service will be constructed of SDR 26 ASTM D2241 PVC pipe and will be encased in flowable fill, as previously specified, along its entire length. Flowable fill shall be provided a minimum of six-inches outside the sewer lateral on the bottom and sides and a minimum of one-foot above the pipe. The ASTM D2241 sewer lateral pipe is to be included in the cost for lateral pipe (Item No. 854). Flowable fill quantities have been adjusted with this addendum. Flowable fill is paid for under the flowable fill pay item.*
- 4. Question:** With all these projects going in at the same day, can some of the items on packet checklist be submitted a later date?

Response: *Certificate of Insurance can be submitted after bid opening but prior to contract execution.*

5. **Question:** In our opinion the magnitude of work will require 300 calendar days to complete. Will SAWS increase their number of days to 300?
Response: ***There will be no increase in the number of calendar days provided for construction.***

6. **Question:** I am verifying these packages are incorporating the new SAWS specifications and are accepting Conshield Manholes as an option in lieu of interior manhole coating?
Response: ***The most current SAWS Construction Specifications are to be used with this Package.***

7. **Question:** I am verifying these packages are incorporating the new SAWS specifications and are accepting as an option polytubing for the water service in lieu of copper?
Response: ***The most current SAWS Construction Specifications are to be used with this Package. Please provide pricing per the Construction Documents.***

8. **Question:** If there are manhole adjustments called for on existing manholes, will SAWS require interior coating be applied? If yes, will a bid item be added for this work?
Response: ***There are no adjustments to existing manholes in Package VI.***

9. **Question:** If there is a bid item on the sewer for air testing, mandrel, and vacuum test, will this item be paid? In the past this has been subsidiary.
Response: ***SAWS Construction Specification 849 has been added to the construction documents. Payment is not subsidiary and is paid per linear foot under Item 849.***

10. **Question:** Some of the water plan pages on the summary call for the water line restrained (all depths). Please clarify if it is SAWS intent for 100% of the water line to be restrained or the contractor will follow SAWS specified lengths on the fittings?
Response: ***The Contractor will follow SAWS Standard Specification Item No. 839.***

| |
|--------------------------------------|
| CHANGES TO THE SPECIFICATIONS |
|--------------------------------------|

1. Adding SAWS Construction Specification Item 849.

| |
|-----------------------------|
| CHANGES TO THE PLANS |
|-----------------------------|

1. Adding SAWS Construction Specification Item 849.
2. Updating flowable fill quantities (see response to question 3).
3. Updated Sanitary Sewer Sheet 7 of 13 (Job #20-5512) to reflect correct quantities.

| |
|-----------------------|
| CLARIFICATIONS |
|-----------------------|

1. As a result of the addition of SAWS Construction Specification Item 849 and the additional flowable fill quantities to account for sanitary sewer lateral encasement, the Opinion of Probable Construction Cost for sanitary sewer work has been updated from \$768,825.38 to \$810,431.00.
2. Please use the revised Bid Packet Checklist attached to this Addendum footnoted Addendum No. 1 when submitting a bid for this project.
3. The public Bid Opening will be conducted on video via a WebEx meeting on Tuesday, September 1, 2020 at 3:00 PM (CT). Reference the Invitation to Bidders for WebEx conference information.

END OF ADDENDUM

This Addendum, including these three (3) pages, is eighteen (18) pages with attachments in its entirety.

Attachments:

1. Overall Sanitary Sewer Quantities Sheet (Sheet 4 of 13, Job #20-5512)
2. Hale Avenue Sewer Layout Sheet (Sheet 5 of 13, Job #20-5512)
3. Hale Avenue Sewer Plan and Profile Sheet (Sheet 6 of 13, Job #20-5512)
4. Hale Avenue Sewer Plan and Profile Sheet (Sheet 7 of 13, Job #20-5512)
5. Hoover Avenue Sewer Plan and Profile Sheet (Sheet 9 of 13, Job #20-5512)
6. Hoover Avenue Sewer Plan and Profile Sheet (Sheet 10 of 13, Job #20-5512)
7. Hoover Avenue Sewer Plan and Profile Sheet (Sheet 11 of 13, Job #20-5512)
8. Hoover Avenue Sewer Plan and Profile Sheet (Sheet 12 of 13, Job #20-5512)
9. Hoover Avenue Water Plan Sheet (Sheet 11 of 15)
10. Bid Proposal (Sheets 1 through 4)
11. SAWS SMP Package VI: Electronic Bid Opening Instructions (Sheet 1 of 2)
12. SAWS SMP Package VI: Bid Packet Checklist (Sheet 2 of 2)





Joseph Marranzino, P.E.
Moy Tarin Ramirez Engineers, LLC

FILE: 20027_04-SWR-QUANTITIES.dwg PLOTTED: 8/24/2020 5:47 PM BY: JOSEPH MARRANZINO

| PROJECT QUANTITY SUMMARY | | | |
|--------------------------|--|------|---------------|
| ITEM NO. | BID ITEM DESCRIPTION | UNIT | EST. QUANTITY |
| 100 | MOBILIZATION | LS | 1 |
| 101 | PREPARING RIGHT OF WAY | LS | 1 |
| 103.1 | REMOVE CONCRETE CURB | LF | 220 |
| 103.3 | REMOVE CONCRETE SIDEWALKS AND DRIVEWAYS | SF | 621 |
| 203.1 | TACK COAT | GAL | 27 |
| 205.4 | 2" HMAC (TYPE D) | SY | 1553 |
| 206 | 10" HMAC (TYPE B) | SY | 1039 |
| 208.1 | SALVAGING, HAULING & STOCKPILING RECLAIMABLE ASPHALTIC PAVEMENT (2" DEPTH) | SY | 258 |
| 209 | CONCRETE PAVEMENT (7" DEPTH) | SY | 17 |
| 413.2 | FLOWABLE FILL (HIGH STRENGTH) | CY | 85 |
| 500.1 | CONCRETE CURB | LF | 220 |
| 502.1 | CONCRETE SIDEWALK | SY | 49 |
| 503.1 | CONCRETE DRIVEWAY | SY | 20 |
| 530.1 | BARRICADES, SIGNS, AND TRAFFIC HANDLING - HALE | EA | 1 |
| 530.1 | BARRICADES, SIGNS, AND TRAFFIC HANDLING - HOOVER | EA | 1 |
| 550 | TRENCH EXCAVATION SAFETY PROTECTION | LF | 1791 |
| 848 | 8" (SDR-26)(ASTM D-3034) PVC SANITARY SEWER PIPE | LF | 1725 |
| 848 | 8" (SDR-26)(ASTM D-2241) PVC SANITARY SEWER PIPE | LF | 66 |
| 849 | SANITARY SEWER ACCEPTANCE TESTING | LF | 1791 |
| 852 | SANITARY SEWER MANHOLE | EA | 8 |
| 852.6.2 | EXTRA DEPTH MANHOLE | VF | 0.55 |
| 854 | 6" SANITARY SEWER LATERAL | LF | 1150 |
| 854 | CLEANOUT (TWO-WAY) FOR SEWER LATERAL | EA | 42 |
| 865 | BYPASS PUMPING (SMALL DIAMETER SANITARY SEWERS) - HALE | EA | 1 |
| 865 | BYPASS PUMPING (SMALL DIAMETER SANITARY SEWERS) - HOOVER | EA | 1 |
| 866 | SEWER MAIN TELEVISIONING INSPECTION (PRE-CONSTRUCTION) | LF | 1791 |
| 866 | SEWER MAIN TELEVISIONING INSPECTION (POST-CONSTRUCTION) | LF | 1791 |

NOTE: ALL ITEMS EXCEPT 100, 101, 852, 852.6.2, 854 (CLEANOUT) AND 865 REFLECT AN APPROXIMATE 10% CONTINGENCY IN THE QUANTITIES FOR THESE ITEMS. THIS CONTINGENCY IS REFLECTED ONLY ON THE SUMMARY SHEET.

MTR
Moy Tarin Ramirez Engineers, LLC
 TBPLS ENGINEERING F-5287/SURVEYING F-10131500
 12770 CIMARRON PATH, SUITE 100 TEL: (210) 698-5051
 SAN ANTONIO, TEXAS 78249 FAX: (210) 698-5085

100% SUBMITTAL

8/25/2020

 JOSEPH MARRANZINO
 124966
 LICENSED PROFESSIONAL ENGINEER

LAN Lockwood, Andrews & Newnam, Inc.
 A LEAD & BOLD COMPANY
 TBPE REGISTRATION NO: F-2614

| | | | | |
|-----|-------------|----|----|---------|
| NO. | REVISION | CD | JM | 8/25/20 |
| 1 | ADDENDUM #1 | | | |

REVISIONS

SAWS 2021 SMP PKG VI
 SEWER IMPROVEMENTS
 SANITARY SEWER
 QUANTITIES SUMMARY

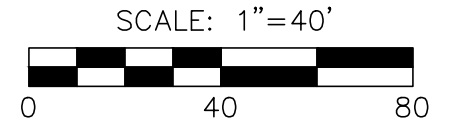
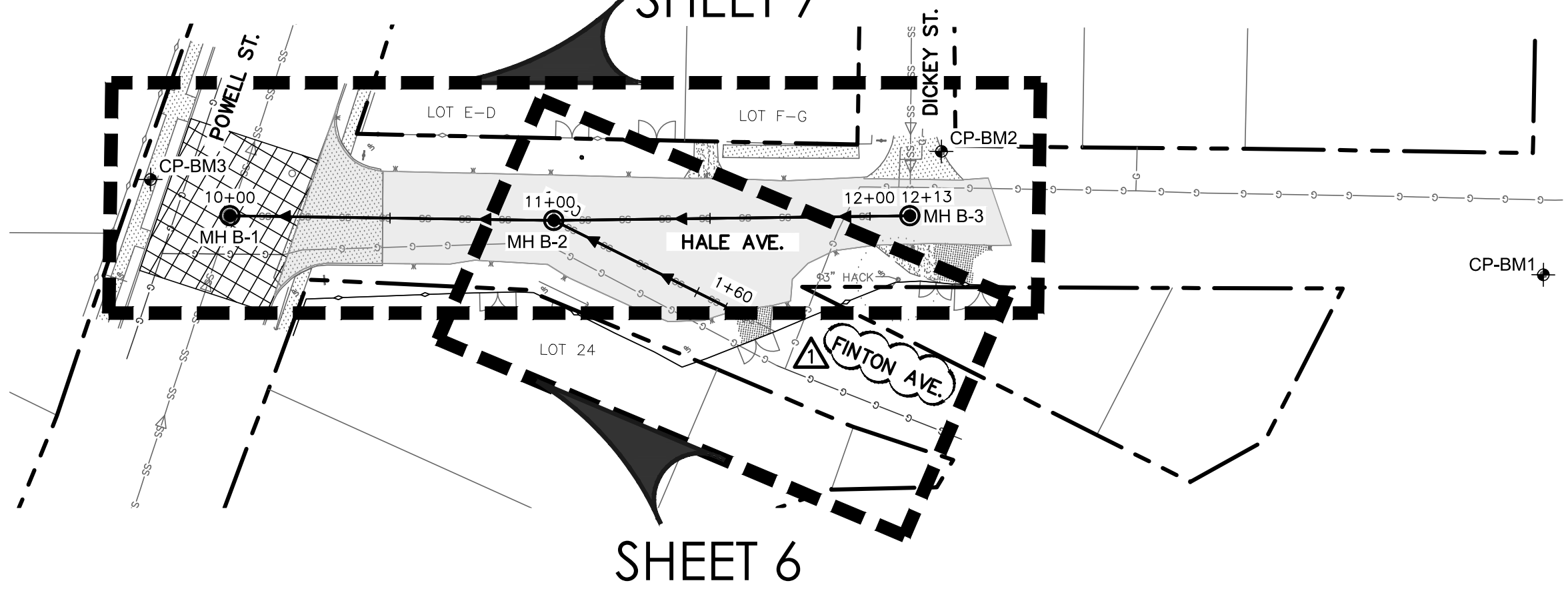
DEVELOPER:
 CONT. CAD BUDGET PROJ.

SUBMITTED _____
 APPROVED _____

MAP NO. 154570 - 146564 - 148564 SHEET 04
 SECT. NO. _____
 DR. JG CK. CD JOB NO. 20-5512 OF 13

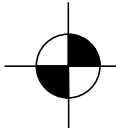
P:\SAWS\2021 - SMP Package VI\Drawings\20027_04-SWR-QUANTITIES.dwg 2020/08/24 5:47 pm jmaranzino


SHEET 7




SHEET 6

CONTROL POINTS/ BENCHMARKS

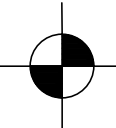
- 


CP-BM1
ELEVATION = 634.26
CP-NAIL W/SHINER STAMPED
"MTR ENGINEERING"
N=13694113.6890
E=2124027.2210
- 


CP-BM2
ELEVATION = 630.49
CP-NAIL W/SHINER STAMPED
"MTR ENGINEERING"
N=13694242.4870
E=2124169.5990
- 

CP-BM3
ELEVATION = 627.73
CP-NAIL W/SHINER STAMPED
"MTR ENGINEERING"
N=13694446.8400
E=2124308.8200

PROPOSED MANHOLES

- 

MH B-1
N=13694433.5440
E=2124284.9880
- 

MH B-2
N=13694352.8430
E=2124223.9270
- 

MH B-3
N=13694262.2900
E=2124159.2100

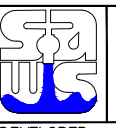
MTR
 • Engineers
 • Surveyors
 • Planners
Moy Tarin Ramirez Engineers, LLC
 TBPLS ENGINEERING F-5287/SURVEYING F-10131500
 12770 CIMARRON PATH, SUITE 100 TEL: (210) 698-5051
 SAN ANTONIO, TEXAS 78249 FAX: (210) 698-5085

100% SUBMITTAL

8/25/2020

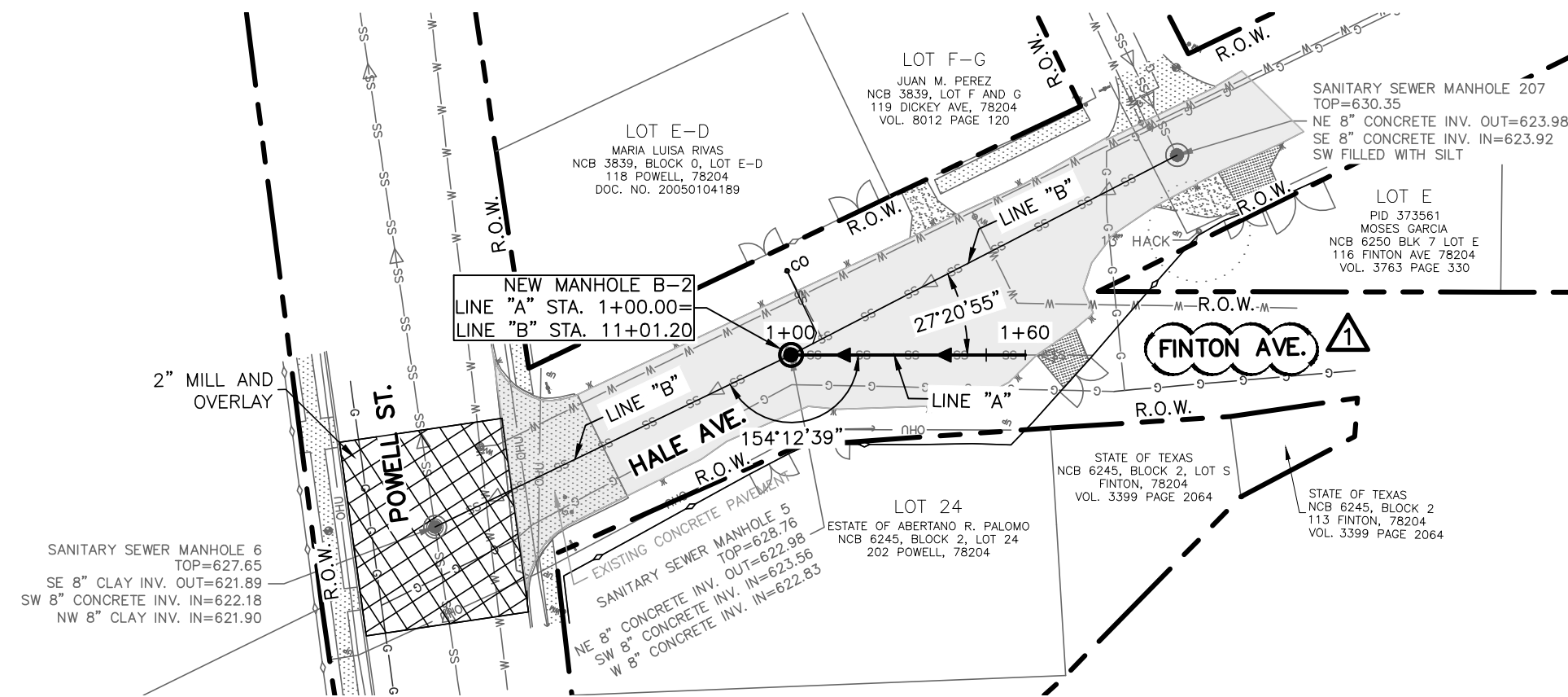


Joseph MARRANZINO

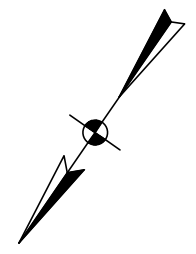
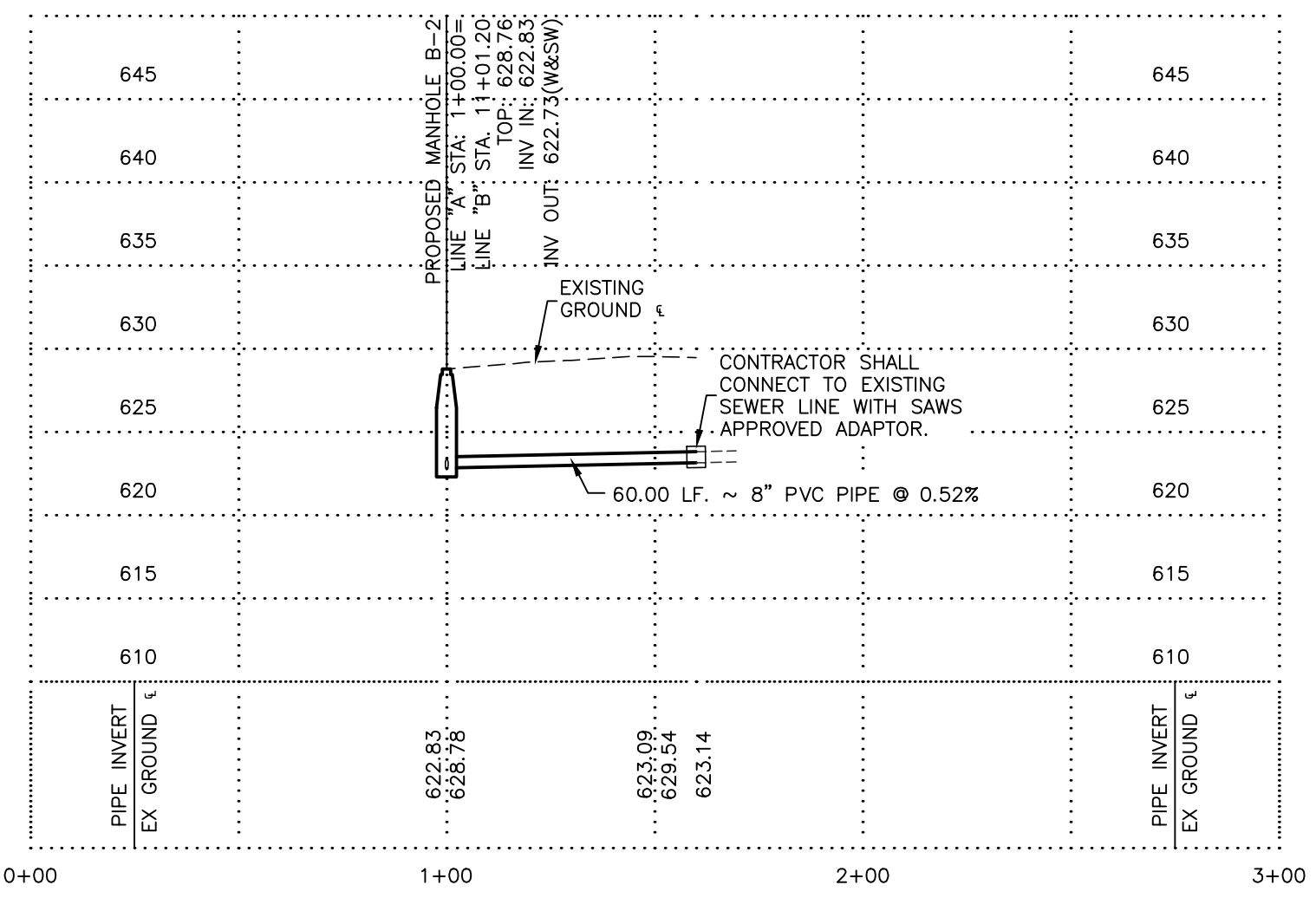
| | | | | |
|---|-------------|-----------------|----------|---------|
| Lockwood, Andrews & Newnam, Inc. A LEAD A DALY COMPANY TBPE REGISTRATION NO: F-2614 | | | | |
| 1 | ADDENDUM #1 | CD | JM | 8/25/20 |
| NO. | REVISION | DRAWN | APPROVED | DATE |
| REVISIONS | | | | |
|  SAWS 2021 SMP PKG VI SEWER IMPROVEMENTS HALE AVENUE SANITARY SEWER SHEET LAYOUT | | | | |
| DEVELOPER: | | | | |
| CONT. CAD | | BUDGET PROJ. | | |
| SUBMITTED _____ | | | | |
| APPROVED _____ | | | | |
| MAP NO. 154570 - 146564 - 148564 | | | | SHEET |
| SECT. NO. | | | | 05 |
| DR. JG | CK. CD | JOB NO. 20-5512 | | OF 13 |

FILE: 20027_05-LAYOUT.dwg PLOTTED: 8/24/2020 5:48 PM BY: JOSEPH MARRANZINO

| SHEET QUANTITY SUMMARY | | | |
|------------------------|--|------|---------------|
| ITEM NO. | BID ITEM DESCRIPTION | UNIT | EST. QUANTITY |
| 205.4 | 2" HMAC (TYPE D) | SY | 31 |
| 206 | 10" HMAC (TYPE B) | SY | 25 |
| 530.1 | BARRICADES, SIGNS, AND TRAFFIC HANDLING | EA | 1 |
| 550 | TRENCH EXCAVATION SAFETY PROTECTION | LF | 60 |
| 848 | 8" (SDR-26)(ASTM D-3034) PVC SANITARY SEWER PIPE | LF | 60 |
| 865 | BYPASS PUMPING (SMALL DIAMETER SANITARY SEWERS) - HALE | EA | 1 |
| 866 | SEWER MAIN TELEVISIONS INSPECTION (PRE-CONSTRUCTION) | LF | 60 |
| 866 | SEWER MAIN TELEVISIONS INSPECTION (POST-CONSTRUCTION) | LF | 60 |



SANITARY SEWER LINE "A"



SCALE: 1"=40'

0 40 80

HORIZONTAL SCALE: 1" = 40'
VERTICAL SCALE: 1" = 10'



MTR • Engineers
• Surveyors
• Planners

Moy Tarin Ramirez Engineers, LLC
TBPLS ENGINEERING F-5287/SURVEYING F-10131500
12770 CIMARRON PATH, SUITE 100 TEL: (210) 698-5051
SAN ANTONIO, TEXAS 78249 FAX: (210) 698-5085

100% SUBMITTAL

SANITARY SEWER NOTES:

- SANITARY SEWER MAIN PIPE SHALL BE SDR 26, ASTM D3034 PVC UNLESS OTHERWISE NOTED.
- CONTRACTOR TO VERIFY AND CONFIRM ANGLE OF INVERT AND HORIZONTAL AND VERTICAL LOCATION OF EXISTING SANITARY SEWER MAIN AND PROVIDE INFORMATION TO ENGINEER PRIOR TO CONSTRUCTION AND SUBMITTING ORDER FOR MANHOLE."

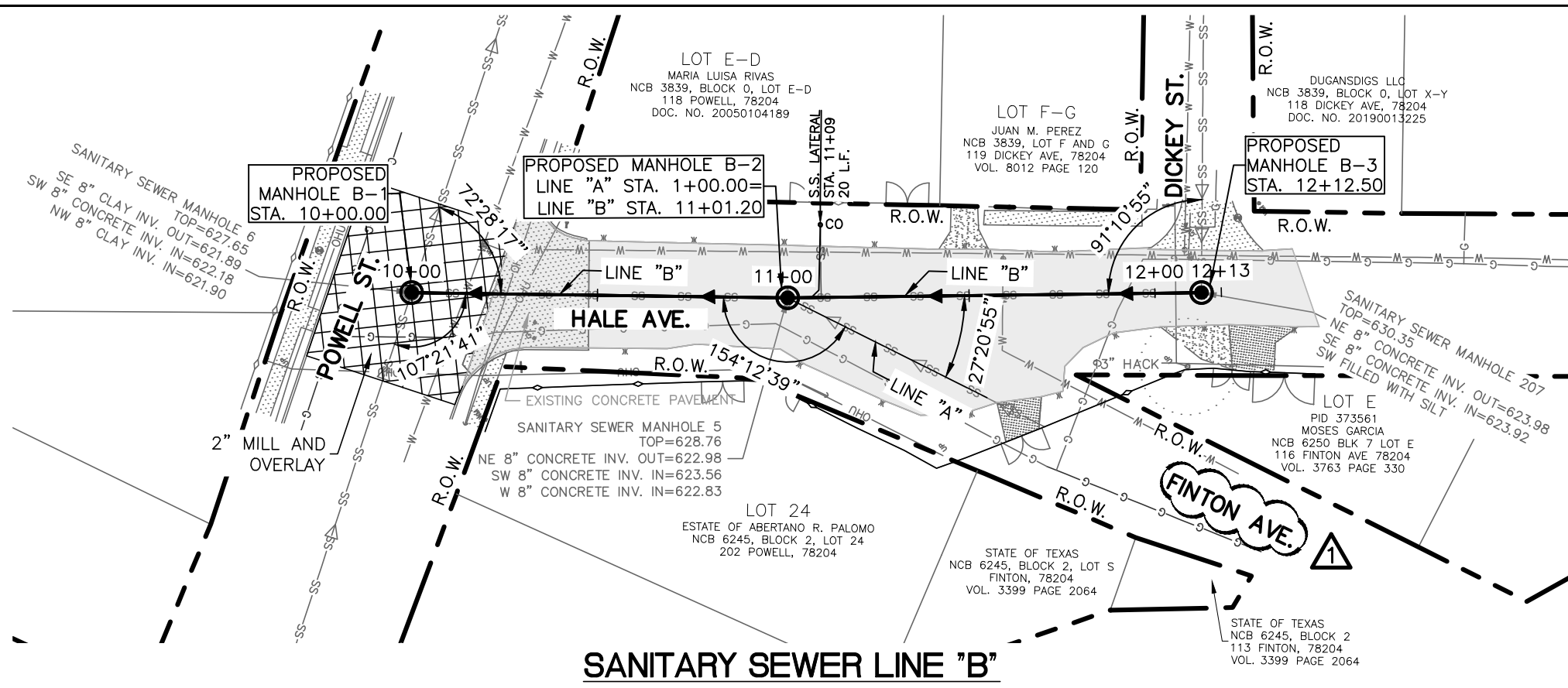
TREES FOUND ON PRIVATE PROPERTY WITH BRANCHES THAT OVERHANG ONTO PUBLIC ROW MAY REQUIRE TRIMMING, PRUNING, AND ROOT PROTECTION FOR CONSTRUCTION AND SHALL FOLLOW APPROVED TREE PERMIT. CONTRACTOR SHALL IDENTIFY OVERHANGING BRANCHES PRIOR TO BIDDING AND CONSTRUCTION. TREE PROTECTION AND PRUNING IS NO SEPARATE PAY ITEM (NSP).

| | | | |
|--|-------------|-----------------|----------|
| Lockwood, Andrews & Newnam, Inc. A LEAD & DAILY COMPANY TBPE REGISTRATION NO: F-2614 | | | |
| NO. | ADDENDUM #1 | CD | JM |
| 1 | REVISION | DRAWN | APPROVED |
| REVISIONS | | | |
| SAWS 2021 SMP PKG VI SEWER IMPROVEMENTS HALE AVENUE SANITARY SEWER LINE "A" STA. 1+00.00 TO STA. 1+60.00 | | | |
| DEVELOPER: | | | |
| CONT. CAD | | BUDGET PROJ. | |
| SUBMITTED | | | |
| APPROVED | | | |
| MAP NO. 154570 - 146564 - 148564 | | SHEET 06 | |
| DR. JG | CK. CD | JOB NO. 20-5512 | |
| | | OF 13 | |

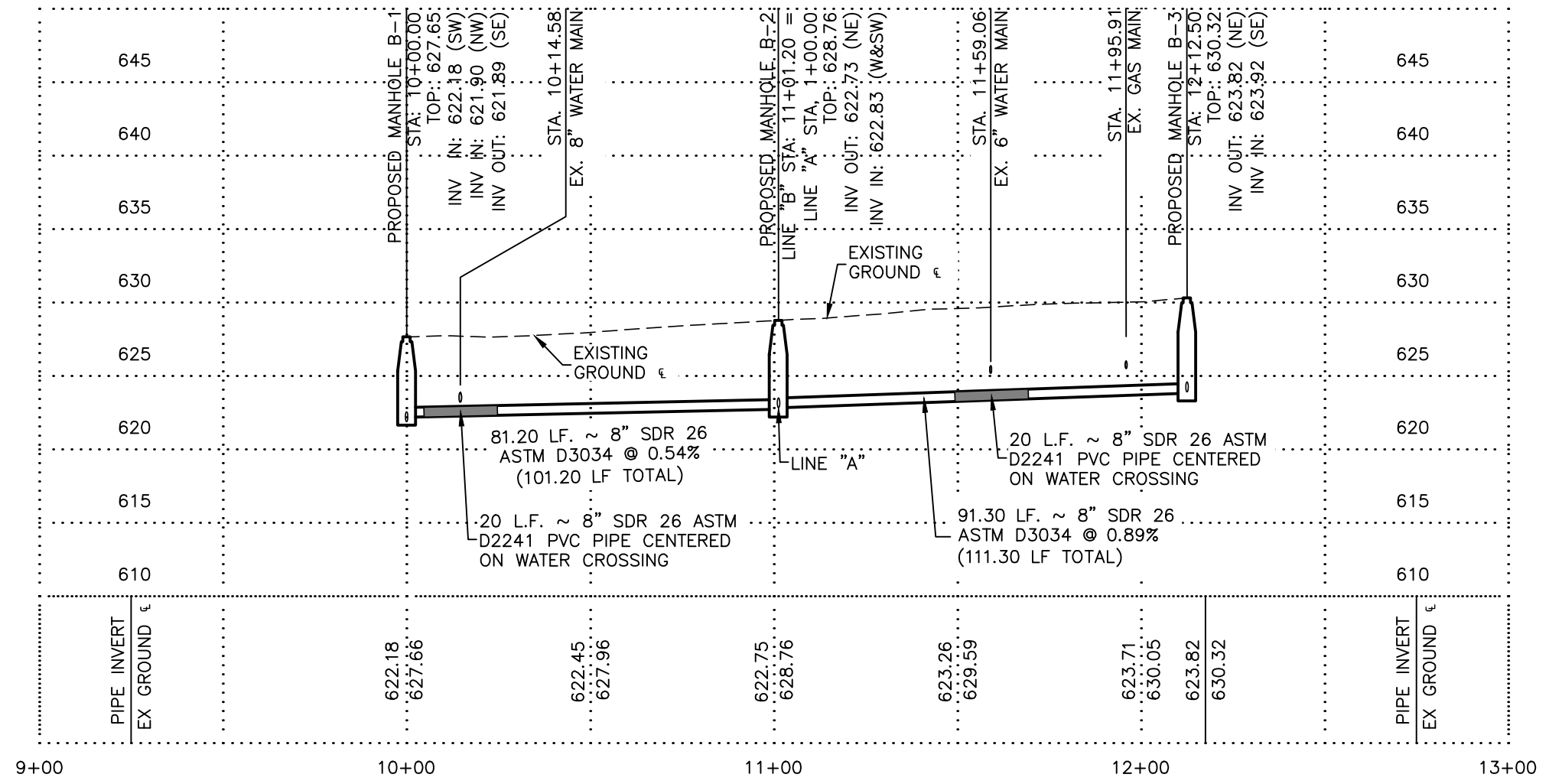
FILE: 20027_06-SWR01.dwg PLOTTED: 8/24/2020 5:48 PM BY: JOSEPH MARRANZINO

P:\SAWS 2021 - SMP Package V\Drawings\Hale 20027_06-SWR01.dwg 2020/08/24 5:48pm jmmarranzino

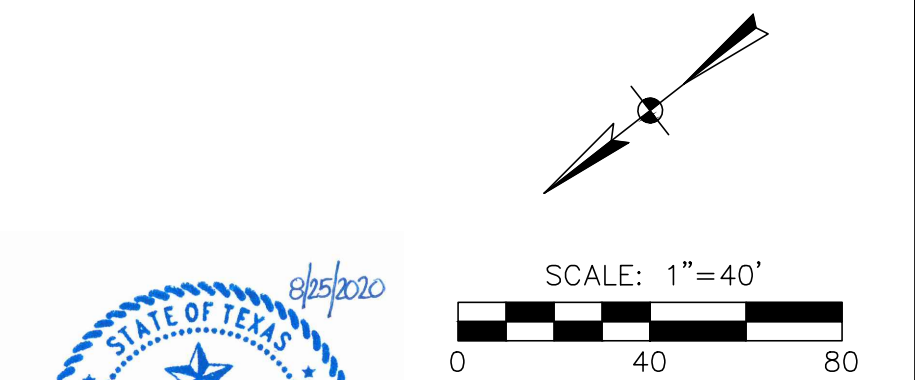
FILE: 20027_07-SWR02.dwg PLOTTED: 8/24/2020 5:49 PM BY: JOSEPH MARRANZINO



SANITARY SEWER LINE "B"



| SHEET QUANTITY SUMMARY | | | |
|------------------------|--|------|---------------|
| ITEM NO. | BID ITEM DESCRIPTION | UNIT | EST. QUANTITY |
| 203.1 | TACK COAT | GAL | 24 |
| 205.4 | 2" HMAC (TYPE D) | SY | 372 |
| 206 | 10" HMAC (TYPE B) | SY | 110 |
| 208.1 | SALVAGING, HAULING & STOCKPILING RECLAIMABLE ASPHALTIC PAVEMENT (2" DEPTH) | SY | 234 |
| 209 | CONCRETE PAVEMENT (7" DEPTH) | SY | 15 |
| 413.2 | FLOWABLE FILL (HIGH STRENGTH) | CY | 2 |
| 550 | TRENCH EXCAVATION SAFETY PROTECTION | LF | 213 |
| 848 | 8" (SDR-26)(ASTM D-3034) PVC SANITARY SEWER PIPE | LF | 173 |
| 848 | 8" (SDR-26)(ASTM D-2241) PVC SANITARY SEWER PIPE | LF | 40 |
| 852 | SANITARY SEWER MANHOLE | EA | 3 |
| 852.6.2 | EXTRA DEPTH MANHOLE | VF | 0.55 |
| 854 | SANITARY SEWER LATERAL | LF | 20 |
| 854 | CLEANOUT (TWO-WAY) FOR SEWER LATERAL | EA | 1 |
| 866 | SEWER MAIN TELEVISIONS INSPECTION (PRE-CONSTRUCTION) | LF | 213 |
| 866 | SEWER MAIN TELEVISIONS INSPECTION (POST-CONSTRUCTION) | LF | 213 |



HORIZONTAL SCALE: 1" = 40'
VERTICAL SCALE: 1" = 10'

MTR
Moy Tarin Ramirez Engineers, LLC
TBPLS ENGINEERING F-5287/SURVEYING F-10131500
12770 CIMARRON PATH, SUITE 100 TEL: (210) 698-5051
SAN ANTONIO, TEXAS 78249 FAX: (210) 698-5085

100% SUBMITTAL

- SANITARY SEWER NOTES:**
- SANITARY SEWER MAIN PIPE SHALL BE SDR 26, ASTM D3034 PVC UNLESS OTHERWISE NOTED.
 - CONTRACTOR TO VERIFY AND CONFIRM ANGLE OF INVERT AND HORIZONTAL AND VERTICAL LOCATION OF EXISTING SANITARY SEWER MAIN AND PROVIDE INFORMATION TO ENGINEER PRIOR TO CONSTRUCTION AND SUBMITTING ORDER FOR MANHOLE.

TREES FOUND ON PRIVATE PROPERTY WITH BRANCHES THAT OVERHANG ONTO PUBLIC ROW MAY REQUIRE TRIMMING, PRUNING, AND ROOT PROTECTION FOR CONSTRUCTION AND SHALL FOLLOW APPROVED TREE PERMIT. CONTRACTOR SHALL IDENTIFY OVERHANGING BRANCHES PRIOR TO BIDDING AND CONSTRUCTION. TREE PROTECTION AND PRUNING IS NO SEPARATE PAY ITEM (NSPI).

Lockwood, Andrews & Newnam, Inc.
A LEAD & BOLD COMPANY
TBPE REGISTRATION NO: F-2614

| NO. | ADDENDUM # | CD | JM | 8/25/20 |
|-----|------------|----|----|---------|
| 1 | | | | |

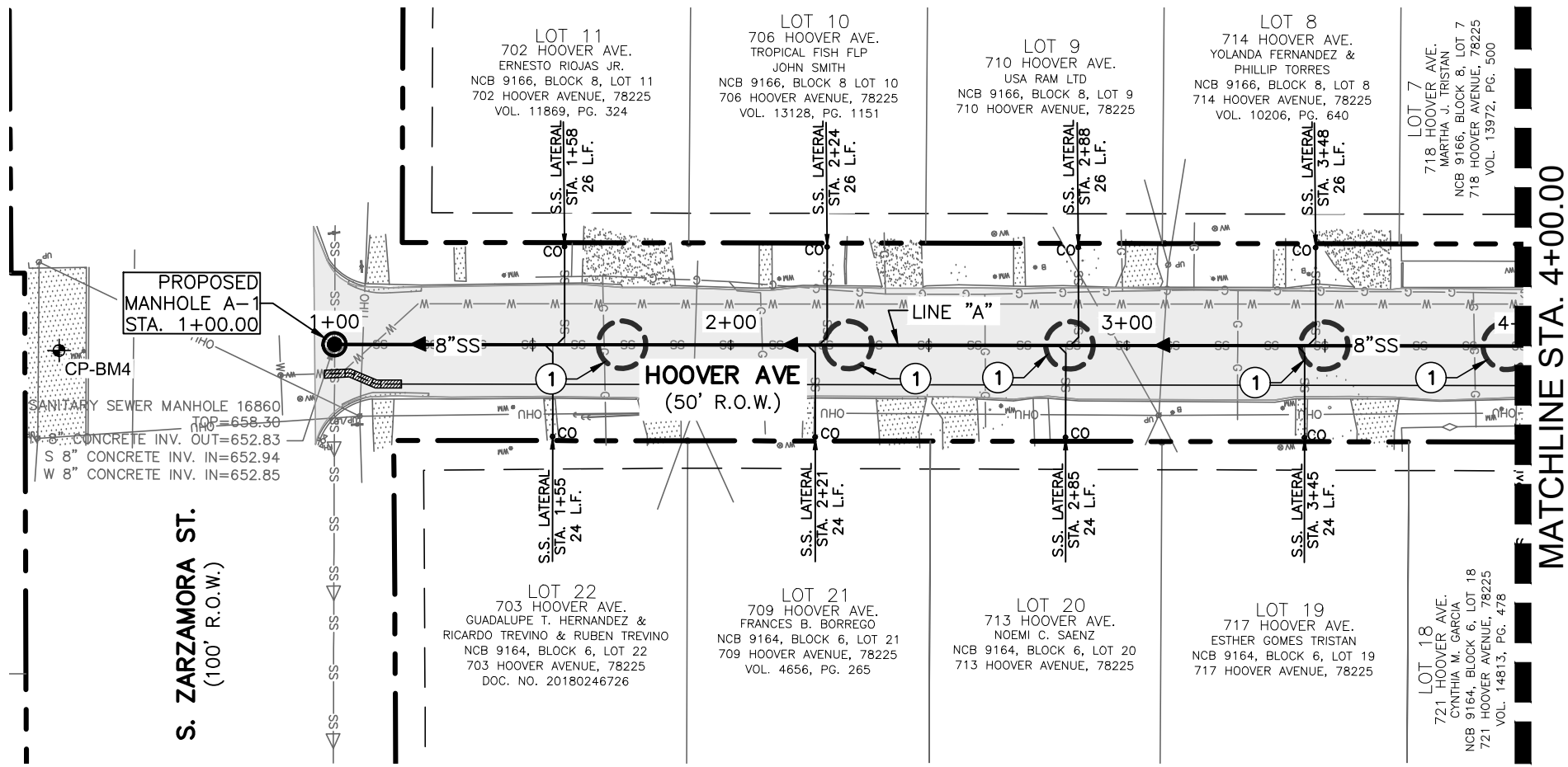
REVISIONS

SAWS 2021 SMP PKG VI
SEWER IMPROVEMENTS
HALE AVENUE
SANITARY SEWER LINE "B"
STA. 10+00.00 TO STA. 12+12.50

DEVELOPER: _____
CONT. CAD BUDGET PROJ.
SUBMITTED _____
APPROVED _____

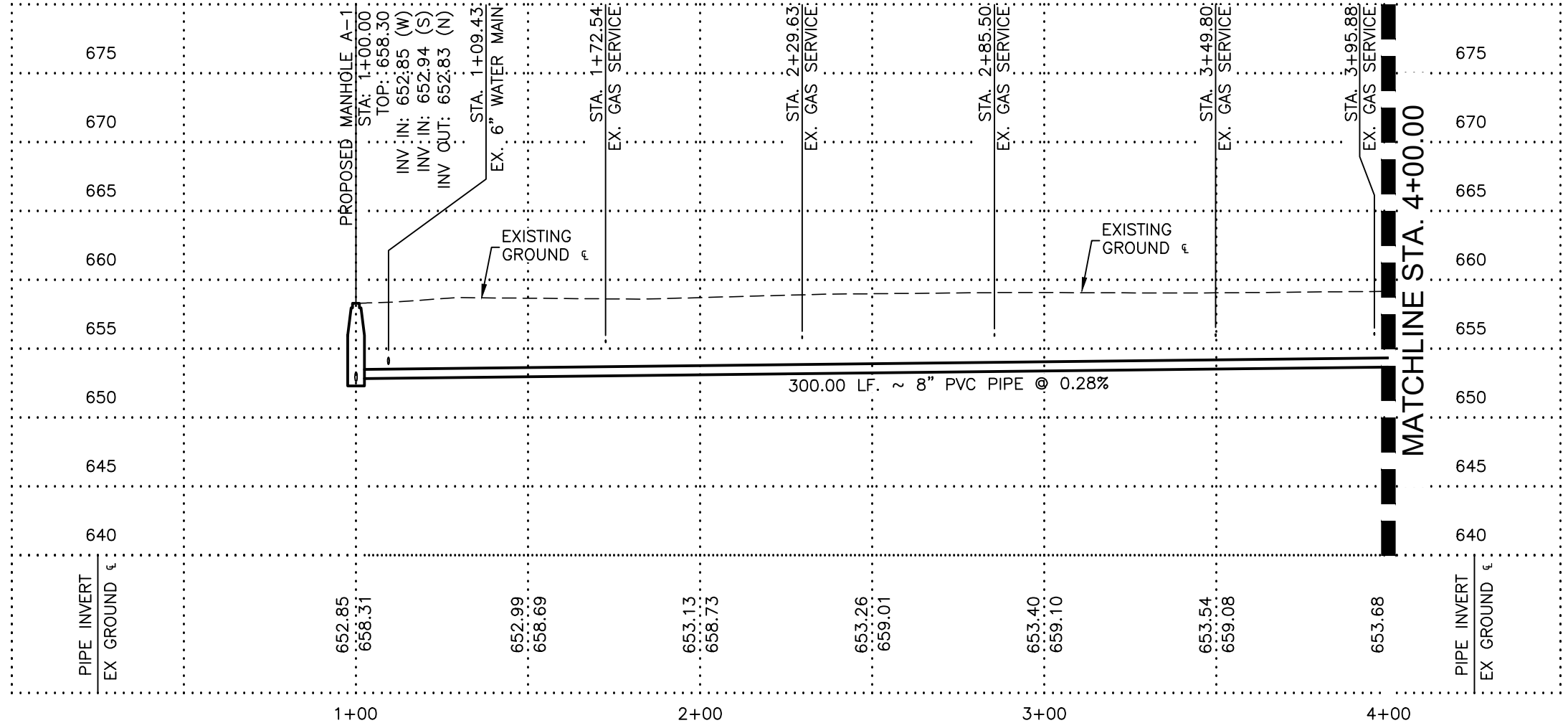
MAP NO. 154570 - 146564 - 148564 SHEET 07
SECT. NO. _____
DR. JG CK. CD JOB NO. 20-5512 OF 13

FILE: 20027_09-SWRSHT.dwg PLOTTED: 8/24/2020 5:54 PM BY: JOSEPH MARRANZINO



MATCHLINE STA. 4+00.00

S. ZARZAMORA ST.
(100' R.O.W.)



MATCHLINE STA. 4+00.00

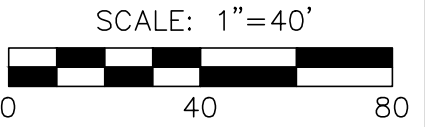
| SHEET QUANTITY SUMMARY | | | |
|------------------------|--|------|---------------|
| ITEM NO. | BID ITEM DESCRIPTION | UNIT | EST. QUANTITY |
| 103.1 | REMOVE CONCRETE CURB | LF | 40 |
| 103.3 | REMOVE CONCRETE SIDEWALKS AND DRIVEWAYS | SF | 108 |
| 205.4 | 2" H/MAC (TYPE D) | SY | 216 |
| 206 | 10" H/MAC (TYPE B) | SY | 173 |
| 413.2 | FLOWABLE FILL (HIGH STRENGTH) | CY | 10 |
| 500.1 | CONCRETE CURB | LF | 40 |
| 502.1 | CONCRETE SIDEWALK | SY | 12 |
| 530.1 | BARRICADES, SIGNS, AND TRAFFIC HANDLING | EA | 1 |
| 550 | TRENCH EXCAVATION SAFETY PROTECTION | LF | 300 |
| 848 | 8" (SDR-26)(ASTM D-3034) PVC SANITARY SEWER PIPE | LF | 300 |
| 852 | SANITARY SEWER MANHOLE | EA | 1 |
| 854 | SANITARY SEWER LATERAL | LF | 200 |
| 854 | CLEANOUT (TWO-WAY) FOR SEWER LATERAL | EA | 8 |
| 865 | BYPASS PUMPING (SMALL DIAMETER SANITARY SEWERS) - HOOVER | EA | 1 |
| 866 | SEWER MAIN TELEVISION INSPECTION (PRE-CONSTRUCTION) | LF | 300 |
| 866 | SEWER MAIN TELEVISION INSPECTION (POST-CONSTRUCTION) | LF | 300 |

SANITARY SEWER NOTES:

- SANITARY SEWER MAIN PIPE SHALL BE SDR 26, ASTM D3034 PVC UNLESS OTHERWISE NOTED.
- CONTRACTOR TO VERIFY AND CONFIRM ANGLE OF INVERT AND HORIZONTAL AND VERTICAL LOCATION OF EXISTING SANITARY SEWER MAIN AND PROVIDE INFORMATION TO ENGINEER PRIOR TO CONSTRUCTION AND SUBMITTING ORDER FOR MANHOLE."

UTILITY KEYNOTES:

- GAS LINE CROSSING.
- WATER MAIN CROSSING. INSTALL NEW WATER MAIN UNDER CROSSING.



MTR
Moy Tarin Ramirez Engineers, LLC
TBPLS ENGINEERING F-5287/SURVEYING F-10131500
12770 CIMARRON PATH, SUITE 100 TEL: (210) 698-5051
SAN ANTONIO, TEXAS 78249 FAX: (210) 698-5085

100% SUBMITTAL

TREES FOUND ON PRIVATE PROPERTY WITH BRANCHES THAT OVERHANG ONTO PUBLIC ROW MAY REQUIRE TRIMMING, PRUNING, AND ROOT PROTECTION FOR CONSTRUCTION AND SHALL FOLLOW APPROVED TREE PERMIT. CONTRACTOR SHALL IDENTIFY OVERHANGING BRANCHES PRIOR TO BIDDING AND CONSTRUCTION. TREE PROTECTION AND PRUNING IS NO SEPARATE PAY ITEM (NSPI).

Lockwood, Andrews & Newnam, Inc.
A LEAD & DAILY COMPANY
TBPE REGISTRATION NO: F-2614

| | | | | |
|-----|-------------|-------|----------|---------|
| 1 | ADDENDUM #1 | CD | JM | 8/25/20 |
| NO. | REVISION | DRAWN | APPROVED | DATE |

REVISIONS

SAWS 2021 SMP PKG VI
SEWER IMPROVEMENTS
HOOVER AVENUE
SANITARY SEWER LINE "A"
BEGIN PROJECT TO STA. 4+00.00

DEVELOPER: _____
CONT. CAD BUDGET PROJ.
SUBMITTED _____
APPROVED _____

MAP NO. 154570 - 146564 - 148564 SHEET 09
SECT. NO. _____
DR. JG CK. CD JOB NO. 20-5512 OF 13

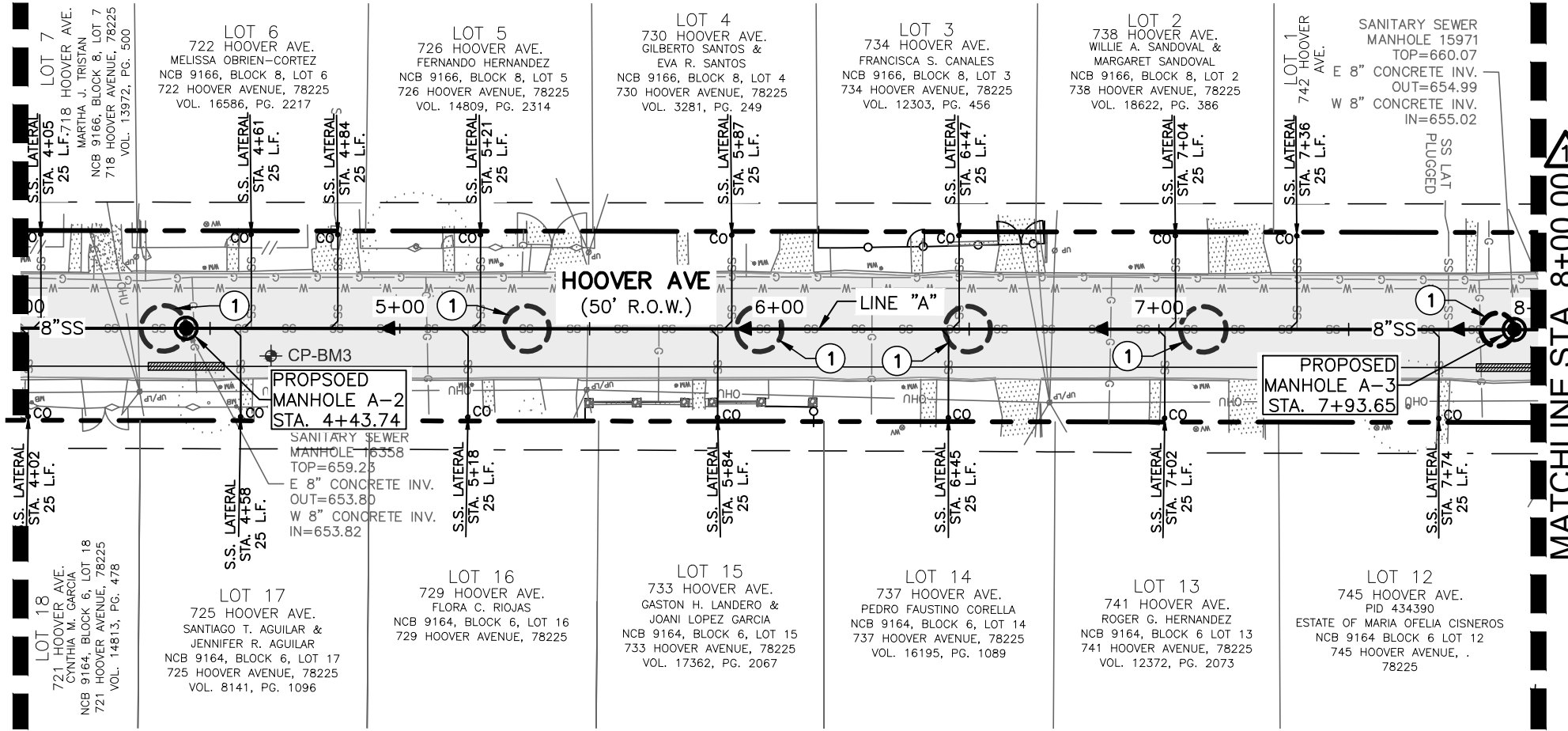
FILE: 20027_10-SWRSHI.dwg PLOTTED: 8/24/2020 5:55 PM BY: JOSEPH MARRANZINO

MATCHLINE STA. 4+00.00

MATCHLINE STA. 4+00.00

MATCHLINE STA. 8+00.00

MATCHLINE STA. 8+00.00



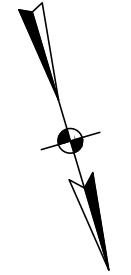
| SHEET QUANTITY SUMMARY | | | |
|------------------------|--|------|---------------|
| ITEM NO. | BID ITEM DESCRIPTION | UNIT | EST. QUANTITY |
| 103.1 | REMOVE CONCRETE CURB | LF | 75 |
| 103.3 | REMOVE CONCRETE SIDEWALKS AND DRIVEWAYS | SF | 270 |
| 205.4 | 2" HMAC (TYPE D) | SY | 318 |
| 206 | 10" HMAC (TYPE B) | SY | 256 |
| 413.2 | FLOWABLE FILL (HIGH STRENGTH) | CY | 26 |
| 500.1 | CONCRETE CURB | LF | 75 |
| 502.1 | CONCRETE SIDEWALK | SY | 12 |
| 503.1 | CONCRETE DRIVEWAY | SY | 18 |
| 550 | TRENCH EXCAVATION SAFETY PROTECTION | LF | 400 |
| 848 | 8" (SDR-26)(ASTM D-3034) PVC SANITARY SEWER PIPE | LF | 400 |
| 852 | SANITARY SEWER MANHOLE | EA | 2 |
| 854 | SANITARY SEWER LATERAL | LF | 375 |
| 854 | CLEANOUT (TWO-WAY) FOR SEWER LATERAL | EA | 15 |
| 866 | SEWER MAIN TELEVISION INSPECTION (PRE-CONSTRUCTION) | LF | 400 |
| 866 | SEWER MAIN TELEVISION INSPECTION (POST-CONSTRUCTION) | LF | 400 |

SANITARY SEWER NOTES:

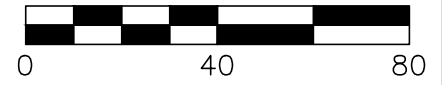
1. SANITARY SEWER MAIN PIPE SHALL BE SDR 26, ASTM D3034 PVC UNLESS OTHERWISE NOTED.
2. CONTRACTOR TO VERIFY AND CONFIRM ANGLE OF INVERT AND HORIZONTAL AND VERTICAL LOCATION OF EXISTING SANITARY SEWER MAIN AND PROVIDE INFORMATION TO ENGINEER PRIOR TO CONSTRUCTION AND SUBMITTING ORDER FOR MANHOLE."

UTILITY KEYNOTES:

- 1 GAS LINE CROSSING.
- 2 WATER MAIN CROSSING. INSTALL NEW WATER MAIN UNDER CROSSING.



SCALE: 1" = 40'

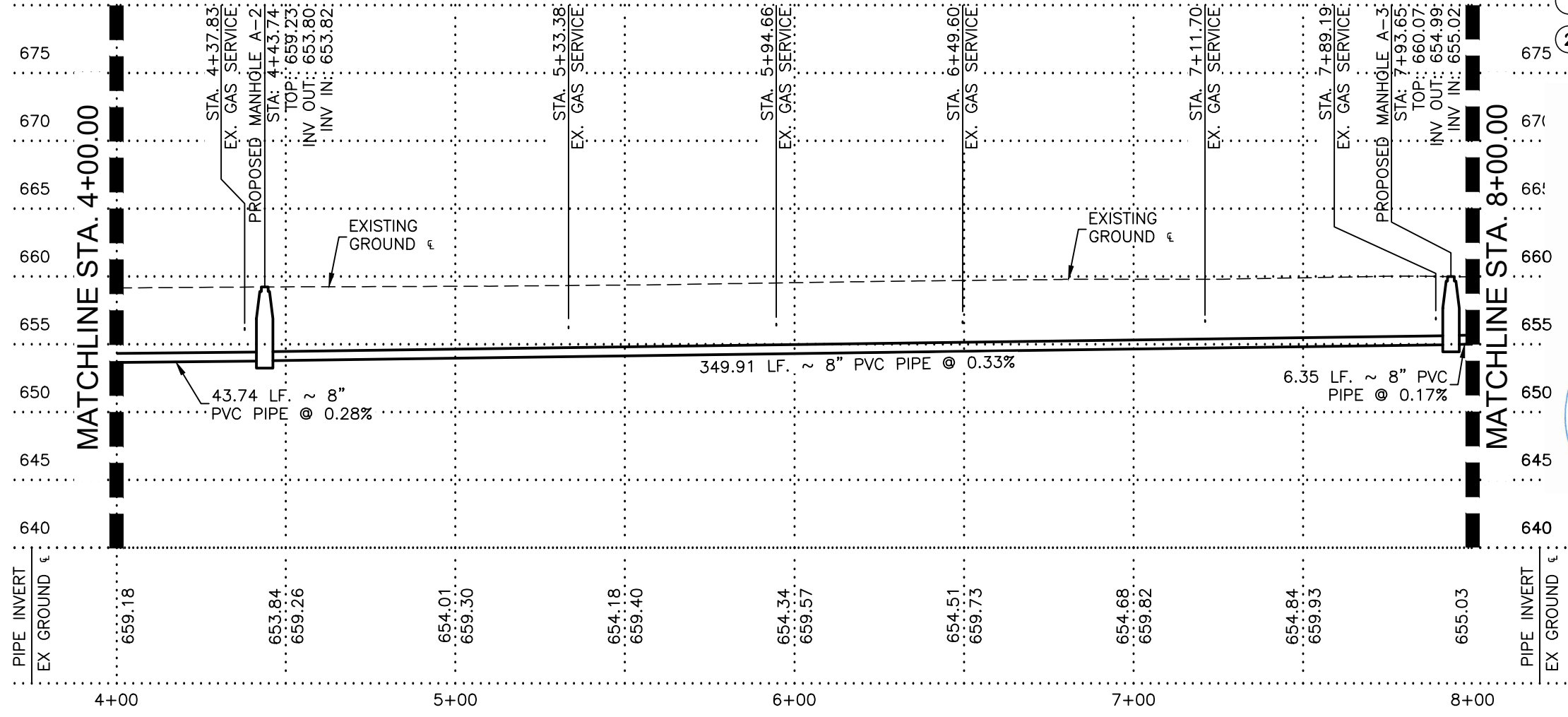


HORIZONTAL SCALE: 1" = 40'
VERTICAL SCALE: 1" = 10'

MTR Engineers, Surveyors, Planners
Moy Tarin Ramirez Engineers, LLC
 TBPLS ENGINEERING F-5287/SURVEYING F-10131500
 12770 CIMARRON PATH, SUITE 100 TEL: (210) 698-5051
 SAN ANTONIO, TEXAS 78249 FAX: (210) 698-5085



TREES FOUND ON PRIVATE PROPERTY WITH BRANCHES THAT OVERHANG ONTO PUBLIC ROW MAY REQUIRE TRIMMING, PRUNING, AND ROOT PROTECTION FOR CONSTRUCTION AND SHALL FOLLOW APPROVED TREE PERMIT. CONTRACTOR SHALL IDENTIFY OVERHANGING BRANCHES PRIOR TO BIDDING AND CONSTRUCTION. TREE PROTECTION AND PRUNING IS NO SEPARATE PAY ITEM (NSPI).



| | | | |
|--|-------------|-----------------------|---------------|
| Lockwood, Andrews & Newnam, Inc. A LEAD & BAILY COMPANY TBPE REGISTRATION NO: F-2614 | | | |
| 1 | ADDENDUM #1 | CD | JM 8/25/2020 |
| NO. | REVISION | DRAWN | APPROVED DATE |
| REVISIONS | | | |
| SAWS 2021 SMP PKG VI SEWER IMPROVEMENTS HOOVER AVENUE SANITARY SEWER LINE "A" STA. 4+00.00 TO STA. 8+00.00 | | | |
| DEVELOPER: CONT. CAD | | BUDGET PROJ. | |
| SUBMITTED _____ | | | |
| APPROVED _____ | | | |
| MAP NO. 154570 - 146564 - 148564 | | SHEET 10 | |
| DR. JG | CK. CD | JOB NO. 20-5512 OF 13 | |

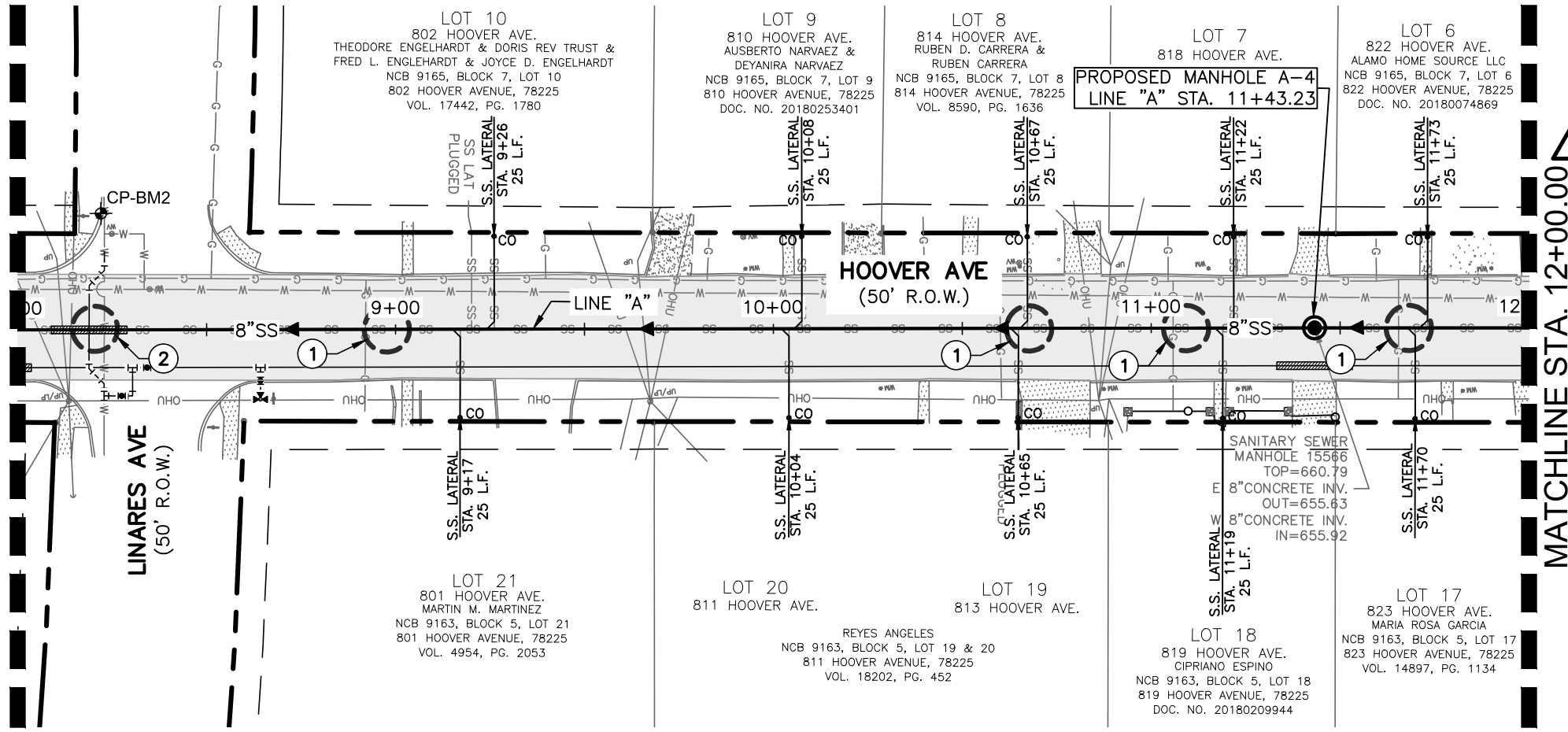
FILE: 20027_11-SWRSH.T.dwg PLOTTED: 8/24/2020 5:55 PM BY: JOSEPH MARRANZINO

MATCHLINE STA. 8+00.00

MATCHLINE STA. 8+00.00

MATCHLINE STA. 12+00.00

MATCHLINE STA. 12+00.00



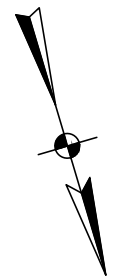
| SHEET QUANTITY SUMMARY | | | |
|------------------------|--|------|---------------|
| ITEM NO. | BID ITEM DESCRIPTION | UNIT | EST. QUANTITY |
| 103.1 | REMOVE CONCRETE CURB | LF | 45 |
| 103.3 | REMOVE CONCRETE SIDEWALKS AND DRIVEWAYS | SF | 108 |
| 205.4 | 2" H/MAC (TYPE D) | SY | 283 |
| 206 | 10" H/MAC (TYPE B) | SY | 227 |
| 413.2 | FLOWABLE FILL (HIGH STRENGTH) | CY | 20 |
| 500.1 | CONCRETE CURB | LF | 45 |
| 502.1 | CONCRETE SIDEWALK | SY | 12 |
| 550 | TRENCH EXCAVATION SAFETY PROTECTION | LF | 400 |
| 848 | 8" (SDR-26)(ASTM D-3034) PVC SANITARY SEWER PIPE | LF | 380 |
| 848 | 8" (SDR-26)(ASTM D-2241) PVC SANITARY SEWER PIPE | LF | 20 |
| 852 | SANITARY SEWER MANHOLE | EA | 1 |
| 854 | SANITARY SEWER LATERAL | LF | 250 |
| 854 | CLEANOUT (TWO-WAY) FOR SEWER LATERAL | EA | 10 |
| 866 | SEWER MAIN TELEVISION INSPECTION (PRE-CONSTRUCTION) | LF | 400 |
| 866 | SEWER MAIN TELEVISION INSPECTION (POST-CONSTRUCTION) | LF | 400 |

SANITARY SEWER NOTES:

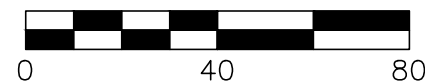
1. SANITARY SEWER MAIN PIPE SHALL BE SDR 26, ASTM D3034 PVC UNLESS OTHERWISE NOTED.
2. CONTRACTOR TO VERIFY AND CONFIRM ANGLE OF INVERT AND HORIZONTAL AND VERTICAL LOCATION OF EXISTING SANITARY SEWER MAIN AND PROVIDE INFORMATION TO ENGINEER PRIOR TO CONSTRUCTION AND SUBMITTING ORDER FOR MANHOLE."

UTILITY KEYNOTES:

- 1 GAS LINE CROSSING.
- 2 WATER MAIN CROSSING. INSTALL NEW WATER MAIN UNDER CROSSING.



SCALE: 1"=40'

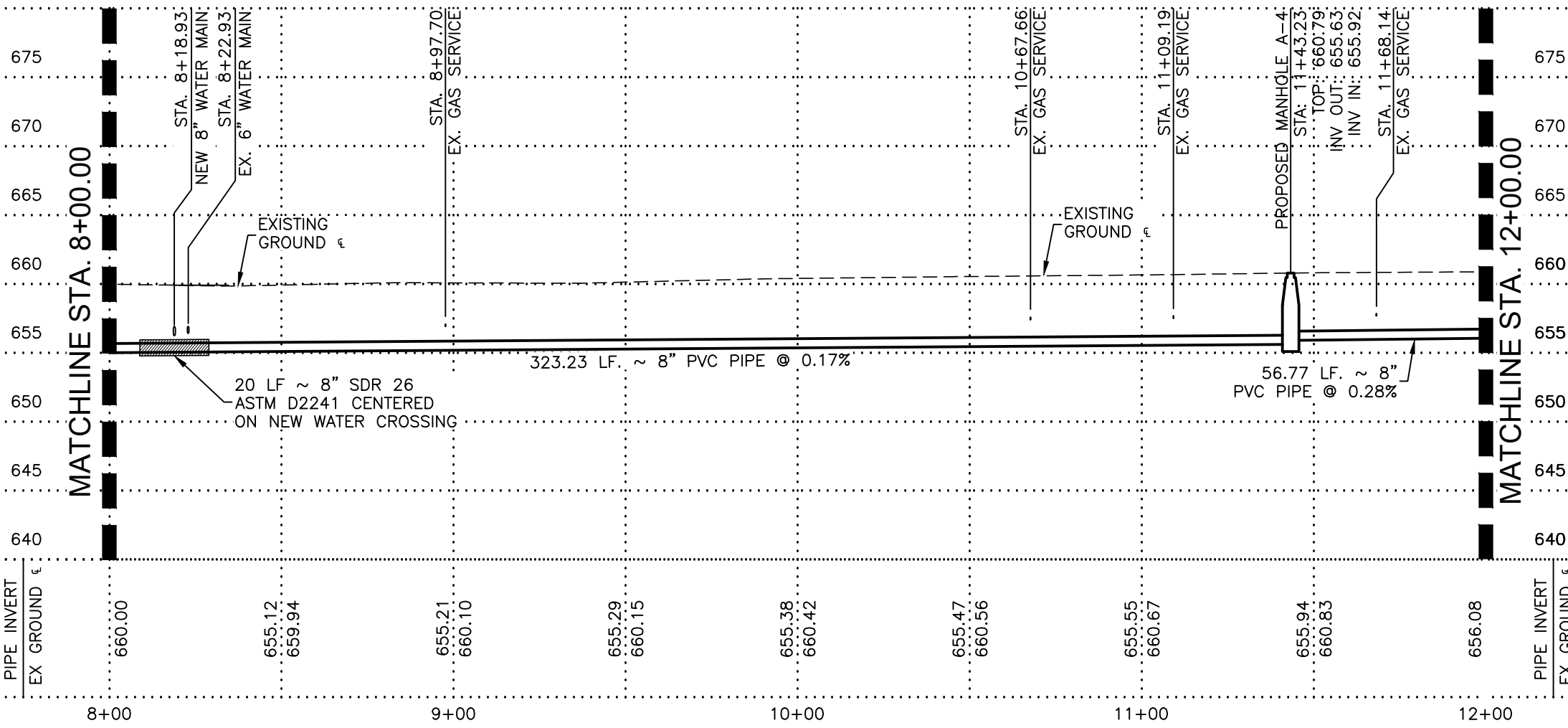


HORIZONTAL SCALE: 1" = 40'
VERTICAL SCALE: 1" = 10'

MTR Engineers, Surveyors, Planners
Moy Tarin Ramirez Engineers, LLC
 TBPLS ENGINEERING F-5287/SURVEYING F-10131500
 12770 CIMARRON PATH, SUITE 100 TEL: (210) 698-5051
 SAN ANTONIO, TEXAS 78249 FAX: (210) 698-5085

100% SUBMITTAL

8/25/2020
 STATE OF TEXAS
 JOSEPH MARRANZINO
 124966
 LICENSED PROFESSIONAL ENGINEER



TREES FOUND ON PRIVATE PROPERTY WITH BRANCHES THAT OVERHANG ONTO PUBLIC ROW MAY REQUIRE TRIMMING, PRUNING, AND ROOT PROTECTION FOR CONSTRUCTION AND SHALL FOLLOW APPROVED TREE PERMIT. CONTRACTOR SHALL IDENTIFY OVERHANGING BRANCHES PRIOR TO BIDDING AND CONSTRUCTION. TREE PROTECTION AND PRUNING IS NO SEPARATE PAY ITEM (NSPI).

LAN Lockwood, Andrews & Newnam, Inc.
 A LEAD A DAILY COMPANY
 TBPE REGISTRATION NO: F-2614

| NO. | ADDENDUM #1 | CD | JM | 8/25/2020 |
|-----|-------------|-------|----------|-----------|
| 1 | | | | |
| | REVISION | DRAWN | APPROVED | DATE |

REVISIONS
 SAWS 2021 SMP PKG VI
 SEWER IMPROVEMENTS
 HOOVER AVENUE
 SANITARY SEWER LINE "A"
 STA. 8+00.00 TO STA. 12+00.00

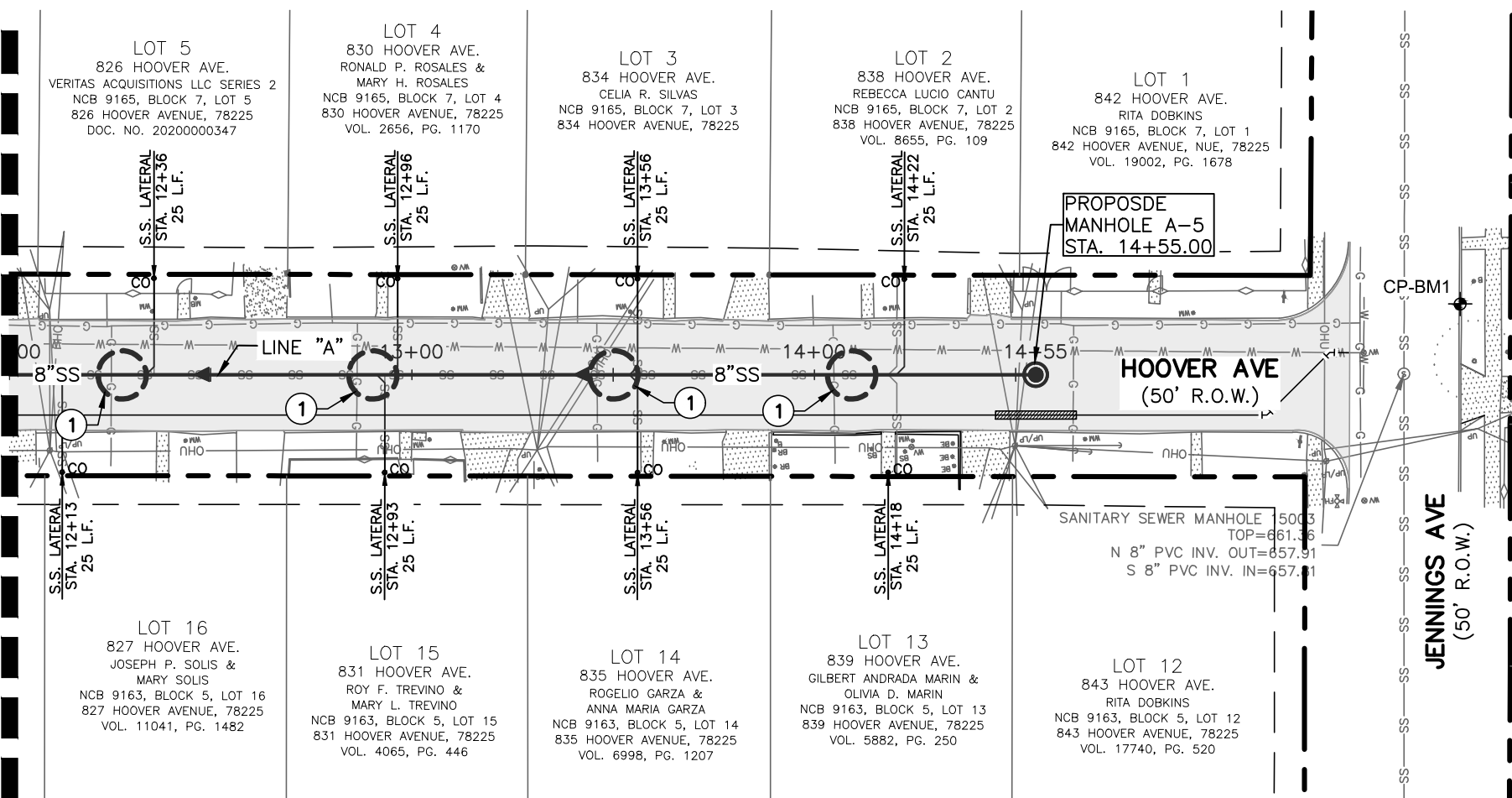
DEVELOPER: [Signature]
 CONT. CAD BUDGET PROJ.
 SUBMITTED [Signature]
 APPROVED [Signature]

MAP NO. 154570 - 146564 - 148564 SHEET 11
 SECT. NO. DR. JG CK. CD JOB NO. 20-5512 OF 13

FILE: 20027_12-SWRSHI.dwg PLOTTED: 8/24/2020 5:56 PM BY: JOSEPH MARRANZINO

MATCHLINE STA. 12+00.00

MATCHLINE STA. 12+00.00



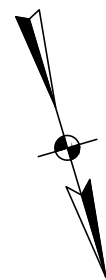
| SHEET QUANTITY SUMMARY | | | |
|------------------------|---|------|---------------|
| ITEM NO. | BID ITEM DESCRIPTION | UNIT | EST. QUANTITY |
| 103.1 | REMOVE CONCRETE CURB | LF | 40 |
| 103.3 | REMOVE CONCRETE SIDEWALKS AND DRIVEWAYS | SF | 72 |
| 205.4 | 2" HMAC (TYPE D) | SY | 191 |
| 206 | 10" HMAC (TYPE B) | SY | 153 |
| 413.2 | FLOWABLE FILL (HIGH STRENGTH) | CY | 19 |
| 500.1 | CONCRETE CURB | LF | 40 |
| 502.1 | CONCRETE SIDEWALK | SY | 8 |
| 550 | TRENCH EXCAVATION SAFETY PROTECTION | LF | 255 |
| 848 | 8" (SDR-26)(ASTM D-3034) PVC SANITARY SEWER PIPE | LF | 255 |
| 852 | SANITARY SEWER MANHOLE | EA | 1 |
| 854 | SANITARY SEWER LATERAL | LF | 200 |
| 854 | CLEANOUT (TWO-WAY) FOR SEWER LATERAL | EA | 8 |
| 866 | SEWER MAIN TELEVISIONS INSPECTION (PRE-CONSTRUCTION) | LF | 255 |
| 866 | SEWER MAIN TELEVISIONS INSPECTION (POST-CONSTRUCTION) | LF | 255 |

SANITARY SEWER NOTES:

1. SANITARY SEWER MAIN PIPE SHALL BE SDR 26, ASTM D3034 PVC UNLESS OTHERWISE NOTED.
2. CONTRACTOR TO VERIFY AND CONFIRM ANGLE OF INVERT AND HORIZONTAL AND VERTICAL LOCATION OF EXISTING SANITARY SEWER MAIN AND PROVIDE INFORMATION TO ENGINEER PRIOR TO CONSTRUCTION AND SUBMITTING ORDER FOR MANHOLE."

UTILITY KEYNOTES:

- 1 GAS LINE CROSSING.
- 2 WATER MAIN CROSSING. INSTALL NEW WATER MAIN UNDER CROSSING.



SCALE: 1"=40'

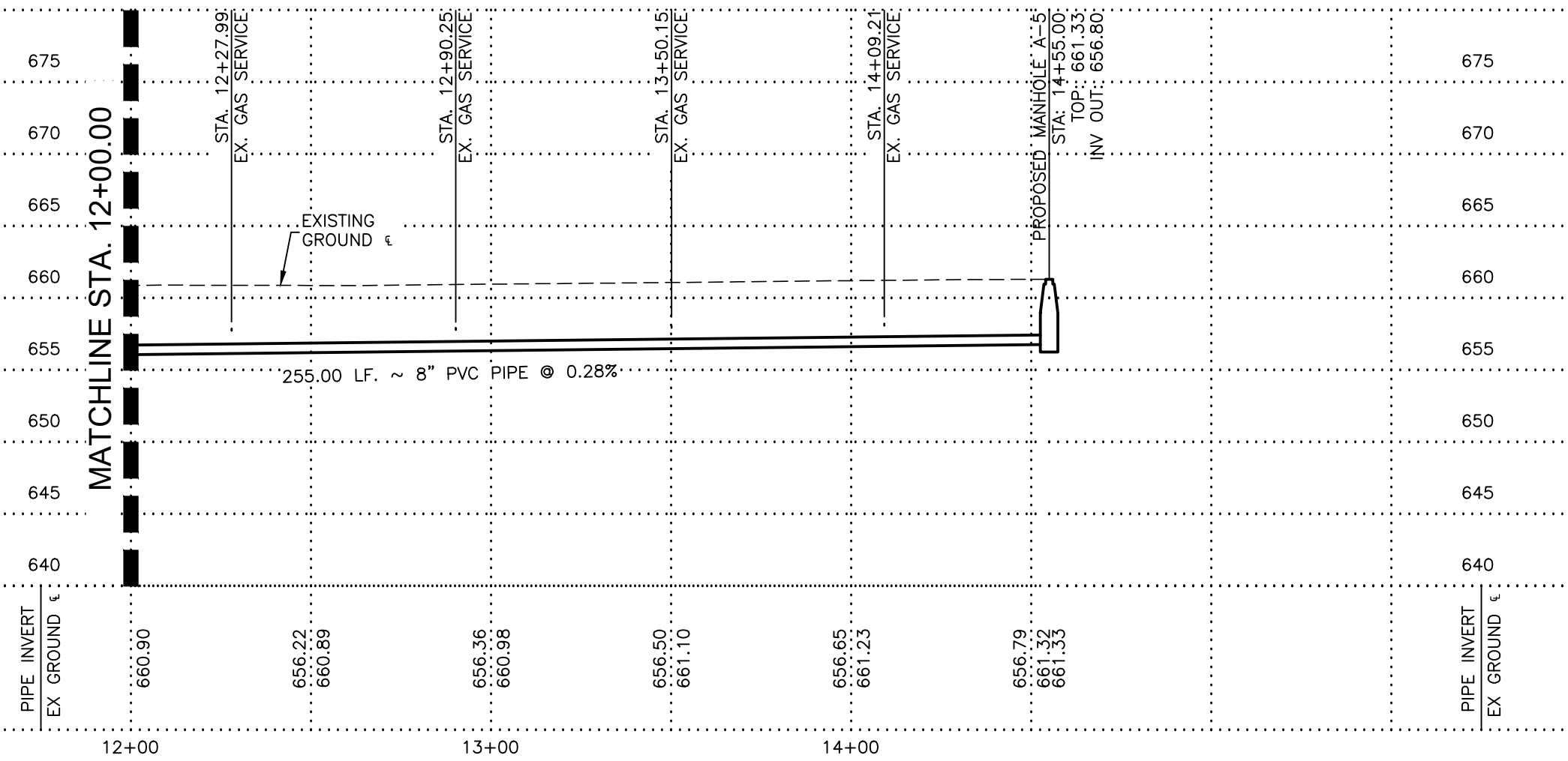


HORIZONTAL SCALE: 1" = 40'
VERTICAL SCALE: 1" = 10'



MTR Engineers, Surveyors, Planners
Moy Tarin Ramirez Engineers, LLC
 TBPLS ENGINEERING F-5287/SURVEYING F-10131500
 12770 CIMARRON PATH, SUITE 100 TEL: (210) 698-5051
 SAN ANTONIO, TEXAS 78249 FAX: (210) 698-5085

100% SUBMITTAL



TREES FOUND ON PRIVATE PROPERTY WITH BRANCHES THAT OVERHANG ONTO PUBLIC ROW MAY REQUIRE TRIMMING, PRUNING, AND ROOT PROTECTION FOR CONSTRUCTION AND SHALL FOLLOW APPROVED TREE PERMIT. CONTRACTOR SHALL IDENTIFY OVERHANGING BRANCHES PRIOR TO BIDDING AND CONSTRUCTION. TREE PROTECTION AND PRUNING IS NO SEPARATE PAY ITEM (NSPI).

LAN Lockwood, Andrews & Newnam, Inc. A LEAD A DALY COMPANY TBPE REGISTRATION NO: F-2614

| NO. | ADDENDUM #1 | CD | JM | 8/25/20 |
|-----|-------------|-------|----------|---------|
| NO. | REVISION | DRAWN | APPROVED | DATE |
| 1 | | | | |

REVISIONS

SAWS 2021 SMP PKG VI SEWER IMPROVEMENTS HOOVER AVENUE SANITARY SEWER LINE "A" STA. 12+00.00 TO END PROJECT

DEVELOPER: CONT. CAD BUDGET PROJ.

SUBMITTED APPROVED

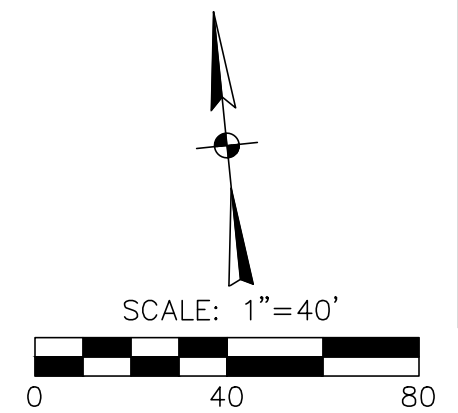
MAP NO. 154570 - 146564 - 148564 SHEET 12
 SECT. NO. DR. JG CK. CD JOB NO. 20-5512 OF 13

P:\SAWS\2021 - SMP Package V\Drawings\Hoover\20027_12-SWRSHI.dwg 2020/08/24 5:56pm jmarranzino

UTILITY KEYNOTES:

- ① WATER MAIN CROSSING. INSTALL NEW WATER MAIN UNDER CROSSING. PROVIDE 2' CLEARANCE.
- ② GAS LINE CROSSING. INSTALL NEW WATER MAIN UNDER CROSSING. PROVIDE 2' CLEARANCE.
- ③ UNDERGROUND ELECTRIC LINE CROSSING. INSTALL NEW WATER MAIN UNDER CROSSING. PROVIDE 2' CLEARANCE.

TREES FOUND ON PRIVATE PROPERTY WITH BRANCHES THAT OVERHANG ONTO PUBLIC ROW MAY REQUIRE TRIMMING, PRUNING, AND ROOT PROTECTION FOR CONSTRUCTION AND SHALL FOLLOW APPROVED TREE PERMIT. CONTRACTOR SHALL IDENTIFY OVERHANGING BRANCHES PRIOR TO BIDDING AND CONSTRUCTION. TREE PROTECTION AND PRUNING IS NO SEPARATE PAY ITEM (NSPI).



MTR
 • Engineers
 • Surveyors
 • Planners
Moy Tarin Ramirez Engineers, LLC
 TBPLS ENGINEERING F-5287/SURVEYING F-10131500
 12770 CIMARRON PATH, SUITE 100 TEL: (210) 698-5051
 SAN ANTONIO, TEXAS 78249 FAX: (210) 698-5085

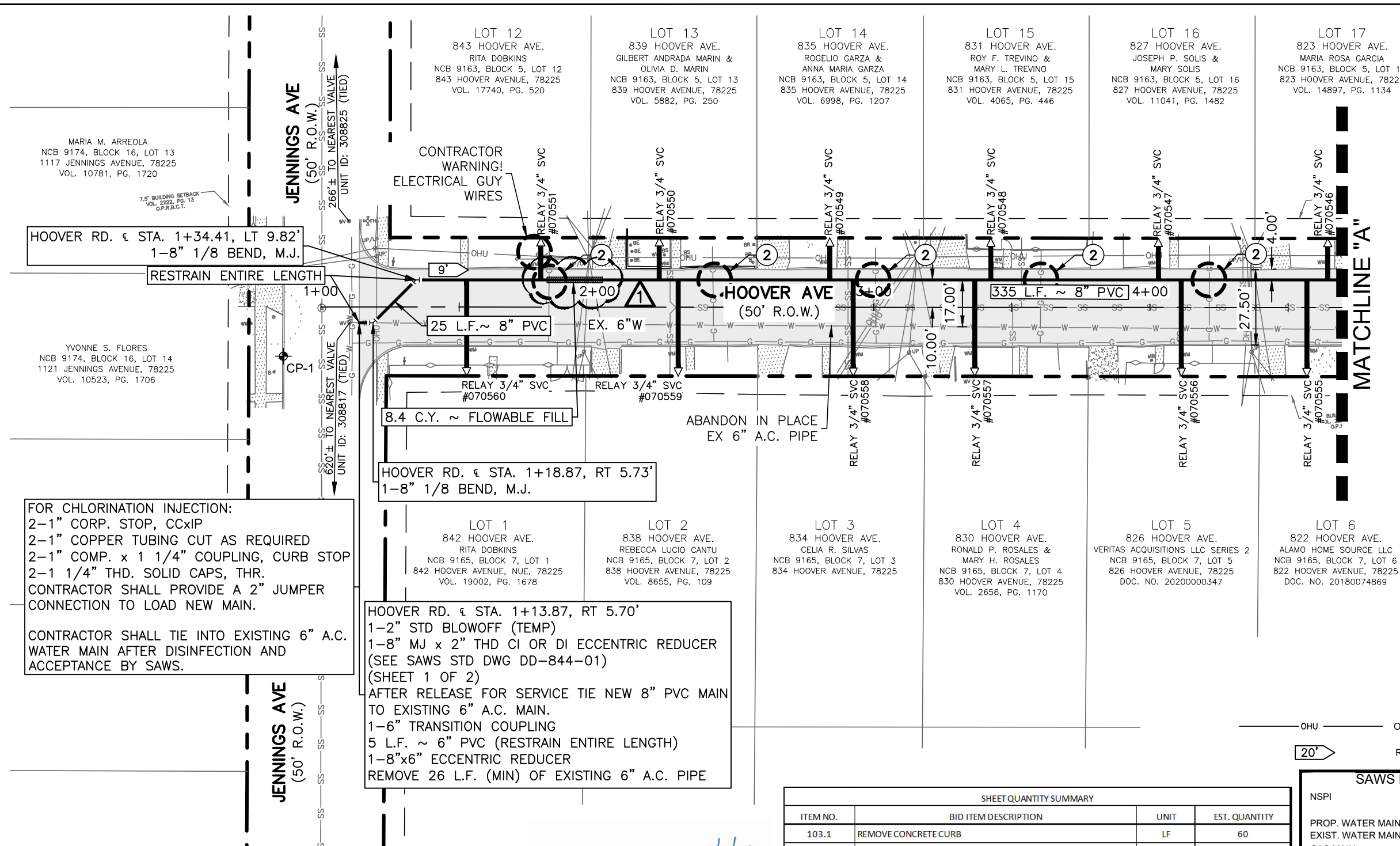
100% SUBMITTAL

SAWS LEGEND

| NSPI | NO SEPARATE PAY ITEM |
|----------------------------|----------------------|
| PROP. WATER MAIN | |
| EXIST. WATER MAIN | |
| GAS MAIN | |
| SANITARY SEWER | |
| STORM SEWER | |
| UTILITY POLE LINE | |
| UNDERGROUND ELECTRIC CABLE | |
| TELEPHONE CABLE | |
| DUAL BRANCH SERV. | |
| NEW UNMETERED SERVICE: | |
| 3/4" SINGLE | |
| 1" DUAL | |
| SERVICE RECONNECT: | |
| 3/4" | |
| 1" OR LARGER | |
| SERVICE RELAY: | |
| 3/4" | |
| 1" OR LARGER | |
| SERVICE RELOCATE: | |
| 3/4" | |
| 1" OR LARGER | |
| RELOCATE METER | |
| NEW SERVICE: | |
| 3/4" | |
| 1" OR LARGER | |

SHEET QUANTITY SUMMARY

| ITEM NO. | BID ITEM DESCRIPTION | UNIT | EST. QUANTITY |
|----------|--|------|---------------|
| 103.1 | REMOVE CONCRETE CURB | LF | 60 |
| 205.4 | 2" HMAC (TYPE D) | SY | 257 |
| 206 | 10" HMAC (TYPE B) | SY | 203 |
| 413.2 | FLOWABLE FILL (HIGH STRENGTH) | CY | 8.4 |
| 500.1 | CONCRETE CURB | LF | 60 |
| 530.1 | BARRICADES, SIGNS, AND TRAFFIC HANDLING | EA | 1 |
| 550 | TRENCH EXCAVATION SAFETY PROTECTION | LF | 365 |
| 812 | 6" C900 DR18 PVC WATER MAIN | LF | 5 |
| 812 | 8" C900 DR18 PVC WATER MAIN | LF | 360 |
| 824 | RELAY 3/4" METER SERVICE LINE (SHORT) | EA | 6 |
| 824 | RELAY 3/4" METER SERVICE LINE (LONG) | EA | 6 |
| 824 | CUSTOMER SHUT-OFF VALVE W/BOX | EA | 12 |
| 833 | NEW METER BOX | EA | 12 |
| 836 | DUCTILE IRON FITTINGS | TON | 0.3 |
| 840 | 6" WATER TIE IN | EA | 1 |
| 841 | HYDROSTATIC TESTING OPERATIONS | EA | 1 |
| 844 | 2" BLOWOFF (TEMPORARY) | EA | 1 |
| 3000 | REMOVAL, TRANSPORTATION, AND DISPOSAL OF A.C. PIPE | LF | 26 |



FOR CHLORINATION INJECTION:
 2-1" CORP. STOP, CCxIP
 2-1" COPPER TUBING CUT AS REQUIRED
 2-1" COMP. x 1 1/4" COUPLING, CURB STOP
 2-1 1/4" THD. SOLID CAPS, THR.
 CONTRACTOR SHALL PROVIDE A 2" JUMPER CONNECTION TO LOAD NEW MAIN.

CONTRACTOR SHALL TIE INTO EXISTING 6" A.C. WATER MAIN AFTER DISINFECTION AND ACCEPTANCE BY SAWS.

SHEET NOTES:

1. WORK AREA SHALL BE LIMITED TO EASEMENT SHOWN OR EXISTING STREET R.O.W.
2. CONTRACTOR TO FIELD VERIFY EXACT LOCATION OF WATER SERVICES. SERVICES SHOWN ARE FOR QUANTITY PURPOSES ONLY.
3. CONTRACTOR SHALL HYDROSTATIC TEST AND DISINFECT PROPOSED WATER LINES IN ACCORDANCE WITH SAWS ITEMS 841 AND 847.
4. ALL PIPE SHALL BE RESTRAINED AS NOTED ON THE PLANS. REFERENCE SAWS SPECIFICATIONS ITEM 839 FOR RESTRAINT LENGTHS.
5. REFER TO SAWS STANDARD SPECIFICATION NO. 3000 REGARDING HANDLING OF AC PIPE.
6. SEE SAWS GENERAL CONSTRUCTION NOTES AND SUPPLEMENTAL CONSTRUCTION NOTES FOR TYPICAL WATER LINE SHEET NOTES.
7. SEE SUPPLEMENTAL CONSTRUCTION NOTES FOR TRAFFIC CONTROL.
8. SEE WATER SHEET LAYOUT FOR PROJECT CONTROL POINTS.
9. WATER MAIN PIPE SHALL BE C-900 (DR-18) PVC.

FILE: 20027_06-WTRSH1.dwg PLOTTED: 8/24/2020 5:54 PM BY: JOSEPH MARRANZINO

P:\SAWS\2021 - SMP Package V\Drawings\Hoover\20027_06-WTRSH1.dwg 2020/08/24 5:54pm jmmarranzino

Lockwood, Andrews & Newnam, Inc.
 A LEAD-BY COMPANY
 TBPE REGISTRATION NO: F-2614

| | | | | |
|-----|-------------|-------|----------|---------|
| NO. | ADDENDUM #1 | CD | JM | 8/25/20 |
| | REVISION | DRAWN | APPROVED | DATE |

REVISIONS

SAWS 2021 SMP PKG VI
 WATER IMPROVEMENTS
 HOOVER AVENUE
 PROPOSED WATER MAIN
 LAYOUT 1 OF 4

DEVELOPER: _____
 CONT. _____ BUDGET PROJ. _____

SUBMITTED _____
 APPROVED _____

MAP NO. 146654 - 148564 SHEET 11
 SECT. NO. _____ OF 15
 DR. GR. CK. CD JOB NO. 20-5013

BID PROPOSAL

PROPOSAL OF _____, a corporation
a partnership consisting of _____
an individual doing business as _____

THE SAN ANTONIO WATER SYSTEM:

Pursuant to Instructions and Invitation to Bidders, the undersigned proposes to furnish all labor and materials as specified and perform the work required for the project as specified, in accordance with the Plans and Specifications for the following prices in the bid proposal to wit:

PLEASE SEE ATTACHED LIST OF BID ITEMS.

BIDDER'S SIGNATURE & TITLE

FIRM'S NAME (TYPE OR PRINT)

FIRM'S ADDRESS

FIRM'S PHONE NO. /FAX NO.

FIRM'S EMAIL ADDRESS

The Contractor herein acknowledges receipt of the following:
Addendum Nos. _____

OWNER RESERVES THE RIGHT TO ACCEPT THE OVERALL MOST RESPONSIBLE BID.

The bidder offers to construct the Project in accordance with the Contract Documents for the contract price, and to complete the Project within **225** calendar days after the start date as set forth in the Authorization to Proceed. **The bidder understands and accepts the provisions of the contract Documents relating to liquidated damages of the project if not completed on time.**

Complete the additional requirements of the Bid Proposal which are included on the following pages.

Statement on President's Executive Orders

Has your firm **previously** performed work subject to the President's Executive Orders Numbers 11246 and 11375 or any preceding similar executive orders (Numbers 10925 and 11114)?

Yes No

2021 SMP Package VI (Hale Avenue, Hoover Avenue, Kernan Drive)
SAWS Job No.'s 20-5013 & 20-5512

| Line No. | Item No. | Spec No. | Description | Unit | Quantity | Unit Price | Total Price |
|----------|----------|----------|--|------|----------|------------|-------------|
| 1 | 1W | 103.1 | REMOVE CONCRETE CURB | LF | 435 | \$ | \$ |
| 2 | 2W | 103.3 | REMOVE CONCRETE SIDEWALKS AND DRIVEWAYS | SF | 459 | \$ | \$ |
| 3 | 3W | 205.4 | 2" HMAC (TYPE D) | SY | 2028 | \$ | \$ |
| 4 | 4W | 206 | 10" HMAC (TYPE B) | SY | 1608 | \$ | \$ |
| 5 | 5W | 413.2 | FLOWABLE FILL (HIGH STRENGTH) | CY | 47 | \$ | \$ |
| 6 | 6W | 500.1 | CONCRETE CURB | LF | 435 | \$ | \$ |
| 7 | 7W | 502.1 | CONCRETE SIDEWALK | SY | 14 | \$ | \$ |
| 8 | 8W | 503.1 | CONCRETE DRIVEWAY | SY | 37 | \$ | \$ |
| 9 | 9W | 530.1 | BARRICADES, SIGNS, AND TRAFFIC HANDLING-HOOVER | EA | 1 | \$ | \$ |
| 10 | 10W | 530.1 | BARRICADES, SIGNS, AND TRAFFIC HANDLING-KERNAN | EA | 1 | \$ | \$ |
| 11 | 11W | 550 | TRENCH EXCAVATION SAFETY PROTECTION | LF | 3124 | \$ | \$ |
| 12 | 12W | 812 | 6" C900 DR18 PVC WATER MAIN | LF | 44 | \$ | \$ |
| 13 | 13W | 812 | 8" C900 DR18 PVC WATER MAIN | LF | 3080 | \$ | \$ |
| 14 | 14W | 824 | RELAY 3/4" METER SERVICE LINE (SHORT) | EA | 40 | \$ | \$ |
| 15 | 15W | 824 | RELAY 3/4" METER SERVICE LINE (LONG) | EA | 32 | \$ | \$ |
| 16 | 16W | 824 | CUSTOMER SHUT-OFF VALVE W/BOX | EA | 72 | \$ | \$ |
| 17 | 17W | 828 | 8" GATE VALVE | EA | 5 | \$ | \$ |
| 18 | 18W | 833 | NEW METER BOX | EA | 72 | \$ | \$ |
| 19 | 19W | 834.1 | FIRE HYDRANT | EA | 3 | \$ | \$ |
| 20 | 20W | 836 | DUCTILE IRON FITTINGS | TON | 4 | \$ | \$ |

| | | | | | | | |
|----|-----|-------|--|-----|------|----|----|
| 21 | 21W | 840 | 6" WATER TIE IN | EA | 8 | \$ | \$ |
| 22 | 22W | 841 | HYDROSTATIC TESTING OPERATIONS | EA | 6 | \$ | \$ |
| 23 | 23W | 844 | 2" BLOWOFF (TEMPORARY) | EA | 8 | \$ | \$ |
| 24 | 24W | 3000 | REMOVAL, TRANSPORTATION, AND DISPOSAL OF A.C. PIPE | LF | 201 | \$ | \$ |
| 25 | 1S | 103.1 | REMOVE CONCRETE CURB | LF | 220 | \$ | \$ |
| 26 | 2S | 103.3 | REMOVE CONCRETE SIDEWALKS AND DRIVEWAYS | SF | 621 | \$ | \$ |
| 27 | 3S | 203.1 | TACK COAT | GAL | 27 | \$ | \$ |
| 28 | 4S | 205.4 | 2" HMAC (TYPE D) | SY | 1553 | \$ | \$ |
| 29 | 5S | 206 | 10" HMAC (TYPE B) | SY | 1039 | \$ | \$ |
| 30 | 6S | 208.1 | SALVAGING, HAULING & STOCKPILING RECLAIMABLE ASPHALTIC PAVEMENT (2" DEPTH) | SY | 258 | \$ | \$ |
| 31 | 7S | 209 | CONCRETE PAVEMENT (7" DEPTH) | SY | 17 | \$ | \$ |
| 32 | 8S | 413.2 | FLOWABLE FILL (HIGH STRENGTH) | CY | 85 | \$ | \$ |
| 33 | 9S | 500.1 | CONCRETE CURB | LF | 220 | \$ | \$ |
| 34 | 10S | 502.1 | CONCRETE SIDEWALK | SY | 49 | \$ | \$ |
| 35 | 11S | 503.1 | CONCRETE DRIVEWAY | SY | 20 | \$ | \$ |
| 36 | 12S | 530.1 | BARRICADES, SIGNS, AND TRAFFIC HANDLING-HALE | EA | 1 | \$ | \$ |
| 37 | 13S | 530.1 | BARRICADES, SIGNS, AND TRAFFIC HANDLING-HOOVER | EA | 1 | \$ | \$ |
| 38 | 14S | 550 | TRENCH EXCAVATION SAFETY PROTECTION | LF | 1791 | \$ | \$ |
| 39 | 15S | 848 | 8" (SDR-26) (ASTM D-3034) PVC SANITARY SEWER PIPE | LF | 1725 | \$ | \$ |
| 40 | 16S | 848 | 8" (SDR-26) (ASTM D-2241) PVC SANITARY SEWER PIPE | LF | 66 | \$ | \$ |
| 41 | 17S | 849 | SANITARY SEWER ACCEPTANCE TESTING | LF | 1791 | \$ | \$ |
| 42 | 18S | 852 | SANITARY SEWER MANHOLE | EA | 8 | \$ | \$ |

| | | | | | | | |
|-------------------------|-----|---------|---|----|------|----|----|
| 43 | 19S | 852.6.2 | EXTRA DEPTH MANHOLE | VF | 0.55 | \$ | \$ |
| 44 | 20S | 854 | 6" SANITARY SEWER LATERAL | LF | 1150 | \$ | \$ |
| 45 | 21S | 854 | CLEANOUT (TWO-WAY) FOR SEWER LATERAL | EA | 42 | \$ | \$ |
| 46 | 22S | 865 | BYPASS PUMPING (SMALL DIAMETER SANITARY SEWERS)-HALE | EA | 1 | \$ | \$ |
| 47 | 23S | 865 | BYPASS PUMPING (SMALL DIAMETER SANITARY SEWERS)-HOOVER | EA | 1 | \$ | \$ |
| 48 | 24S | 866 | SEWER MAIN TELEVISIONING INSPECTION (PRE-CONSTRUCTION) | LF | 1791 | \$ | \$ |
| 49 | 25S | 866 | SEWER MAIN TELEVISIONING INSPECTION (POST-CONSTRUCTION) | LF | 1791 | \$ | \$ |
| SUBTOTAL (ITEMS 1 - 49) | | | | | | | \$ |

| | | | | | |
|-----|---|--|------|---|----|
| 100 | MOBILIZATION AND DEMOBILIZATION, MAX 10% OF LINE ITEMS 1 – 49 | | L.S. | 1 | \$ |
| 101 | PREPARING ROW, MAX 5% OF LINE ITEMS 1 - 49 | | L.S. | 1 | \$ |

Mobilization and Prep of ROW shall be limited to the maximum percentage shown. **If the percentage exceeds the allowable maximum stated for mobilization and or preparation of ROW, SAWS reserves the right to cap the amount at the percentages shown and adjust the extensions of the bid items accordingly.**

| | |
|---|-----------|
| TOTAL BID PRICE (TO INCLUDE LINE ITEMS 1-49 AND 100-101) | \$ |
|---|-----------|



2021 SMP Package VI Project
Solicitation Number: CO-00360-SM

ELECTRONIC BID OPENING INSTRUCTIONS
September 1, 2020 at 3:00 P.M. CDT)

FTP BID PROPOSAL UPLOAD

In order to receive electronic bids for this project, SAWS will utilize a SAWS secured File Transfer Protocol (FTP) site. Only Bidders bidding as Prime Contractors will need to submit their request prior to **August 31, 2020 by 3:00 P.M.** to receive access to the FTP site via email to **Stella.Manzello@saws.org**. Bidder's email shall provide the legal name of the Bidder's company and the intended recipient's email address and phone number. No requests for FTP site access will be accepted after **August 31, 2020 by 3:00 P.M. (CDT)**. Once a Bidder is approved for access, an email with a hyperlink to the FTP site and a unique password for the Bidder will be provided to the Bidder's email recipient.

Once access is received, Bidders may upload the required documents per the Bid Proposal checklist any time before **September 1, 2020 by 3:00 P.M. (CDT)**. Please ensure to allow sufficient time should Bidder's experience technical difficulties in uploading the required documents. No changes to the Bid nor bid price can be made once the Bid has been submitted.

Bidders shall comply with the following:

- 1) Limit files to one (1) pdf file that includes all requested documents, per the Bid Packet Checklist. **ONLY ONE SUBMITTAL WILL BE ACCEPTED PER REQUEST.** Do not upload any zip files.
- 2) Ensure that the itemized List of Bid Items is (are) the first page(s) of your file.
- 3) Bidders may protect the document from editing by adding a password. However, the document must be accessible for viewing by SAWS without requiring a password.
- 4) File shall be named: **CO-00360 – 2021 SMP Package VI Project.**
- 5) **DO NOT SHARE ACCESS AND/OR PASSWORD WITH OTHER PARTIES OUTSIDE YOUR COMPANY.**
- 6) **ENSURE THE BID IS SENT NO LATER THAN THE DUE DATE AND TIME. BIDS SUBMITTED AFTER THE BID OPENING DEADLINE WILL NOT BE ACCEPTED.**

If the Bidder is in need of help, they may contact the SAWS Contract Administrator, **Stella Manzello**, at 210-233-3854 or view troubleshooting tips at <http://www.Serv-U.com/sharefiles>

WEBEX BID OPENING MEETING

The WebEx meeting details are below if you would like to view the public opening of the bids.

When it's time, start or join the WebEx meeting from [here](#).

Access Information

Meeting Number: **146 889 1483**

Meeting Password: **7Z2p9JGmFCC**

Audio Connection: 210-233-2090 (SAWS WebEx)

If you have any questions or concerns, please feel free to contact me.

Thank you,

Stella Manzello

Contract Administrator

2800 U.S. Highway 281 North, Ste. 171 | San Antonio, TX 78212

Office | 210-233-3854

Email | Stella.Manzello@saws.org

BID PACKET CHECKLIST
2021 SMP Package VI PROJECT
SAWS Job No. 20-5013 & 20-5513
SAWS Solicitation No. CO-00360-SM

This checklist is a required document that must be utilized and submitted with the Bid Packet. The Bid Packet should include the following items in this order:

- Signed Bid Proposal Signature Page, Acknowledgement of All Addendums and Executive Order
- List of Bid Items
- Bid Packet Checklist
- Signed Proposal Certification
- Bid Bond
- Completed Good Faith Effort Plan
- Conflict of Interest Questionnaire - Form CIQ (*Rev. 11/30/2015*)
- Company Information Packet
- Statement regarding ability to complete the project
- W-9
- Statement of Bidder's Experience
- Detailed Baseline Schedule
- *And, if bid was submitted electronically without a Bid Bond:**
- Cashier's Check or Certified Check